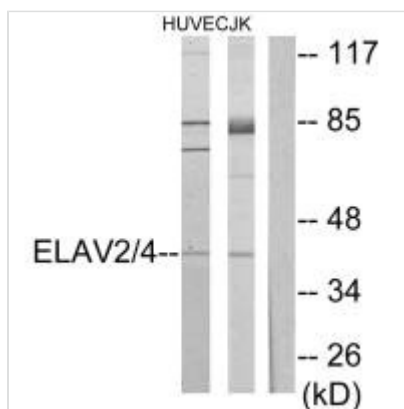




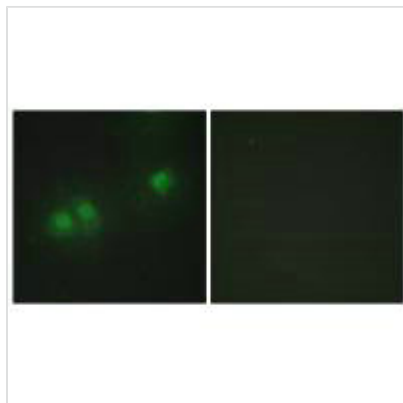
ELAVL2/ELAVL4 Antibody

Product Code	CSB-PA267812
Storage	Upon receipt, store at -20°C or -80°C. Avoid repeated freeze.
Uniprot No.	Q12926
Immunogen	Synthesized peptide derived from internal of Human ELAV2/4.
Raised In	Rabbit
Species Reactivity	Human,Mouse,Rat
Specificity	The antibody detects endogenous levels of total ELAV2/4 protein.
Tested Applications	ELISA,WB,IF;WB:1:500-1:3000,IF:1:100-1:500
Form	Rabbit IgG in phosphate buffered saline (without Mg ²⁺ and Ca ²⁺), pH 7.4, 150mM NaCl, 0.02% sodium azide and 50% glycerol.
Purification Method	The antibody was affinity-purified from rabbit antiserum by affinity-chromatography using epitope-specific immunogen.
Clonality	Polyclonal
Alias	ELAV-like protein 4; Paraneoplastic encephalomyelitis antigen HuD; Hu-antigen D; ELAVL4; HUD
Product Type	Polyclonal Antibody
Immunogen Species	Homo sapiens (Human)
Target Names	ELAVL2/ELAVL4

Image



Western blot analysis of extracts from HUVEC cells and Jurkat cells, using ELAV2/4 antibody.



Immunofluorescence analysis of HepG2 cells, using ELAV2/4 antibody.

Usage

For Research Use Only. Not for use in diagnostic or therapeutic procedures.