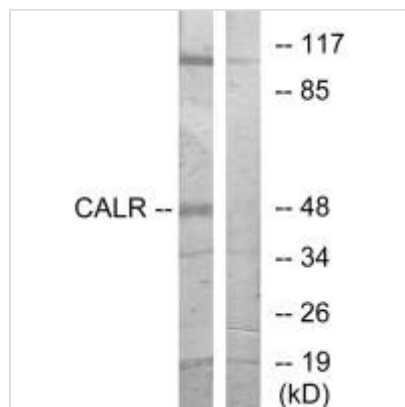




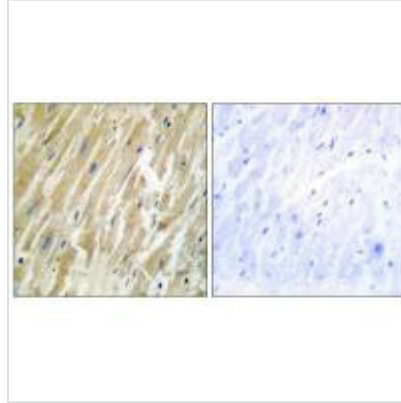
CALR Antibody

Product Code	CSB-PA162228
Storage	Upon receipt, store at -20°C or -80°C. Avoid repeated freeze.
Uniprot No.	P27797
Immunogen	Synthesized peptide derived from internal of Human CALR.
Raised In	Rabbit
Species Reactivity	Human,Mouse,Rat
Specificity	The antibody detects endogenous levels of total CALR protein.
Tested Applications	ELISA,WB,IHC,IF;WB:1:500-1:3000,IHC:1:50-1:100,IF:1:100-1:500
Form	Rabbit IgG in phosphate buffered saline (without Mg ²⁺ and Ca ²⁺), pH 7.4, 150mM NaCl, 0.02% sodium azide and 50% glycerol.
Purification Method	The antibody was affinity-purified from rabbit antiserum by affinity-chromatography using epitope-specific immunogen.
Clonality	Polyclonal
Alias	CALR; CRP55; CRTC; Calreticulin precursor; ERp60
Product Type	Polyclonal Antibody
Immunogen Species	Homo sapiens (Human)
Target Names	CALR

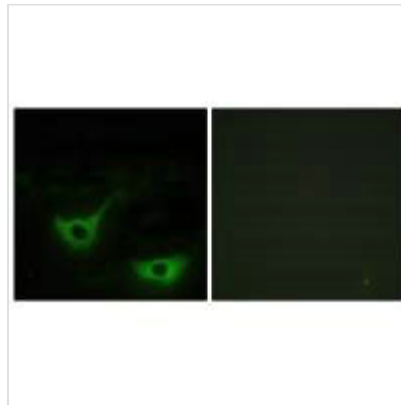
Image



Western blot analysis of extracts from COS-7 cells, using CALR antibody.



Immunohistochemistry analysis of paraffin-embedded human heart tissue using CALR antibody.



Immunofluorescence analysis of NIH/3T3 cells, using CALR antibody.

Usage

For Research Use Only. Not for use in diagnostic or therapeutic procedures.