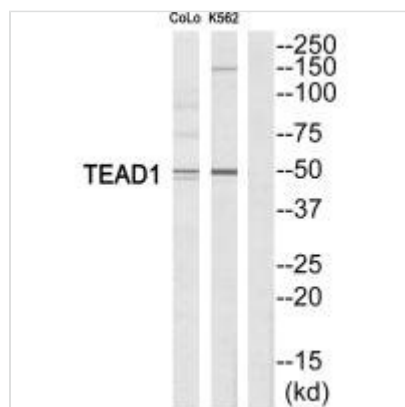




TEAD1 Antibody

Product Code	CSB-PA921314
Storage	Upon receipt, store at -20°C or -80°C. Avoid repeated freeze.
Uniprot No.	P28347
Immunogen	Synthesized peptide derived from Internal of Human TEAD1.
Raised In	Rabbit
Species Reactivity	Human
Specificity	The antibody detects endogenous levels of total TEAD1protein.
Tested Applications	ELISA,WB;WB:1:500-1:3000
Form	Rabbit IgG in phosphate buffered saline (without Mg ²⁺ and Ca ²⁺), pH 7.4, 150mM NaCl, 0.02% sodium azide and 50% glycerol.
Purification Method	The antibody was affinity-purified from rabbit antiserum by affinity-chromatography using epitope-specific immunogen.
Clonality	Polyclonal
Alias	AA; atrophica areata; peripapillary chorioretinal degeneration; NTEF-1; Protein GT-IIC
Product Type	Polyclonal Antibody
Immunogen Species	Homo sapiens (Human)
Target Names	TEAD1

Image



Western blot analysis of extracts from COLO205/K562 cells, using TEAD1 antibody.