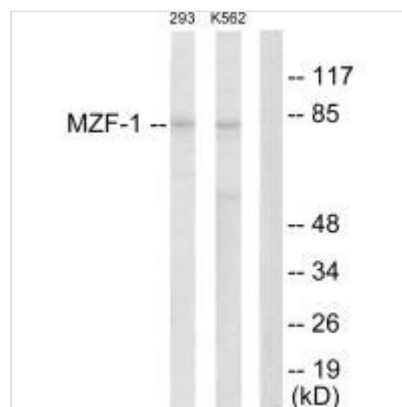




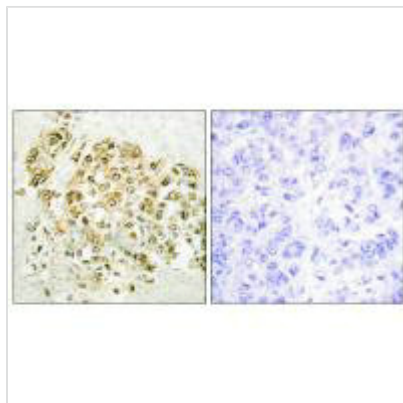
MZF1 Antibody

Product Code	CSB-PA915557
Storage	Upon receipt, store at -20°C or -80°C. Avoid repeated freeze.
Uniprot No.	P28698
Immunogen	Synthesized peptide derived from N-terminal of Human MZF-1.
Raised In	Rabbit
Species Reactivity	Human
Specificity	The antibody detects endogenous levels of total MZF-1 protein.
Tested Applications	ELISA,WB,IHC;WB:1:500-1:3000,IHC:1:50-1:100
Form	Rabbit IgG in phosphate buffered saline (without Mg ²⁺ and Ca ²⁺), pH 7.4, 150mM NaCl, 0.02% sodium azide and 50% glycerol.
Purification Method	The antibody was affinity-purified from rabbit antiserum by affinity-chromatography using epitope-specific immunogen.
Clonality	Polyclonal
Alias	Myeloid zinc finger 1; MZF-1; Zinc finger protein 42; Zinc finger and SCAN domain-containing protein 6; MZF1
Product Type	Polyclonal Antibody
Immunogen Species	Homo sapiens (Human)
Target Names	MZF1

Image



Western blot analysis of extracts from 293 cells and K562 cells, using MZF-1 antibody.



Immunohistochemistry analysis of paraffin-embedded human breast carcinoma tissue using MZF-1 antibody.

Usage

For Research Use Only. Not for use in diagnostic or therapeutic procedures.