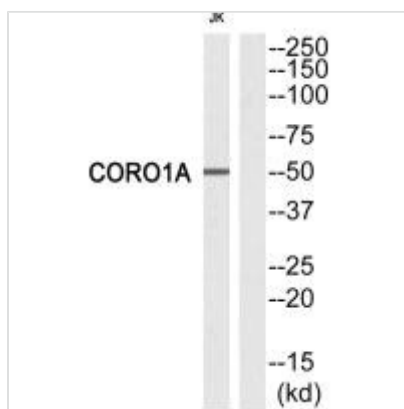




CORO1A Antibody

Product Code	CSB-PA259764
Storage	Upon receipt, store at -20°C or -80°C. Avoid repeated freeze.
Uniprot No.	P31146
Immunogen	Synthesized peptide derived from Internal of Human CORO1A.
Raised In	Rabbit
Species Reactivity	Human
Specificity	The antibody detects endogenous levels of total CORO1A protein.
Tested Applications	ELISA, WB; WB: 1:500-1:3000
Form	Rabbit IgG in phosphate buffered saline (without Mg ²⁺ and Ca ²⁺), pH 7.4, 150mM NaCl, 0.02% sodium azide and 50% glycerol.
Purification Method	The antibody was affinity-purified from rabbit antiserum by affinity-chromatography using epitope-specific immunogen.
Clonality	Polyclonal
Alias	CLABP; Clipin-A; CLIPINA; COR1A; CORO1
Product Type	Polyclonal Antibody
Immunogen Species	Homo sapiens (Human)
Target Names	CORO1A

Image



Western blot analysis of extracts from Jurkat cells, using CORO1A antibody.

Usage

For Research Use Only. Not for use in diagnostic or therapeutic procedures.