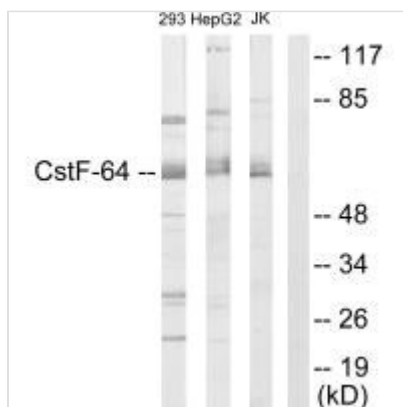




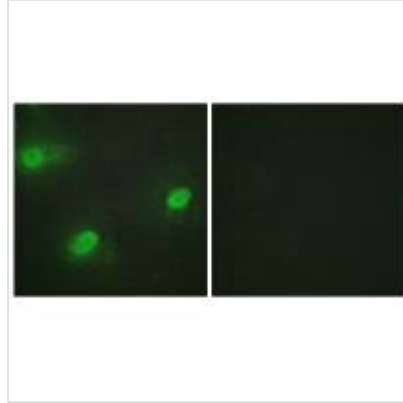
CSTF2 Antibody

Product Code	CSB-PA092943
Storage	Upon receipt, store at -20°C or -80°C. Avoid repeated freeze.
Uniprot No.	P33240
Immunogen	Synthesized peptide derived from N-terminal of Human CSTF2.
Raised In	Rabbit
Species Reactivity	Human, Mouse
Specificity	The antibody detects endogenous levels of total CSTF2 protein.
Tested Applications	ELISA, WB, IF; WB: 1:500-1:3000, IF: 1:100-1:500
Form	Rabbit IgG in phosphate buffered saline (without Mg ²⁺ and Ca ²⁺), pH 7.4, 150mM NaCl, 0.02% sodium azide and 50% glycerol.
Purification Method	The antibody was affinity-purified from rabbit antiserum by affinity-chromatography using epitope-specific immunogen.
Clonality	Polyclonal
Alias	CF-1 64 kDa; CSTF 64 kDa; CstF-64; cleavage stimulation factor subunit 2; cleavage stimulation factor
Product Type	Polyclonal Antibody
Immunogen Species	Homo sapiens (Human)
Target Names	CSTF2

Image



Western blot analysis of extracts from 293 cells, HepG2 cells and Jurkat cells, using CSTF2 antibody.



Immunofluorescence analysis of HeLa cells, using CSTF2 antibody.

Usage

For Research Use Only. Not for use in diagnostic or therapeutic procedures.