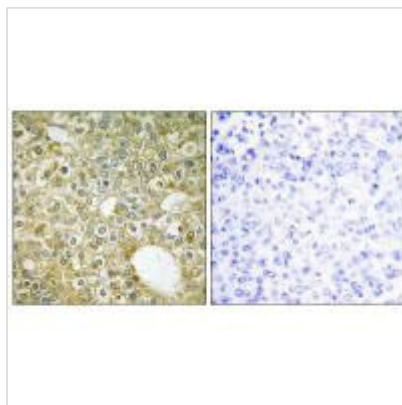




# ACVRL1 Antibody

<b>Product Code</b>	CSB-PA439392
<b>Storage</b>	Upon receipt, store at -20°C or -80°C. Avoid repeated freeze.
<b>Uniprot No.</b>	P37023
<b>Immunogen</b>	Synthesized peptide derived from internal of Human ACVL1.
<b>Raised In</b>	Rabbit
<b>Species Reactivity</b>	Human,Mouse,Rat
<b>Specificity</b>	The antibody detects endogenous levels of total ACVL1 protein.
<b>Tested Applications</b>	ELISA,WB,IHC,IF;WB:1:500-1:3000,IHC:1:50-1:100,IF:1:100-1:500
<b>Form</b>	Rabbit IgG in phosphate buffered saline (without Mg <sup>2+</sup> and Ca <sup>2+</sup> ), pH 7.4, 150mM NaCl, 0.02% sodium azide and 50% glycerol.
<b>Purification Method</b>	The antibody was affinity-purified from rabbit antiserum by affinity-chromatography using epitope-specific immunogen.
<b>Clonality</b>	Polyclonal
<b>Alias</b>	ACVL1; ACVRL1; ACVRLK1; ALK-1; Activin receptor-like kinase 1
<b>Product Type</b>	Polyclonal Antibody
<b>Immunogen Species</b>	Homo sapiens (Human)
<b>Target Names</b>	ACVRL1

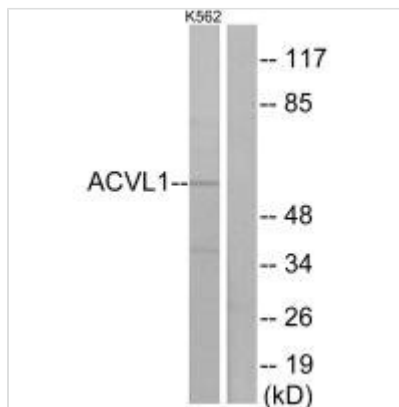
## Image



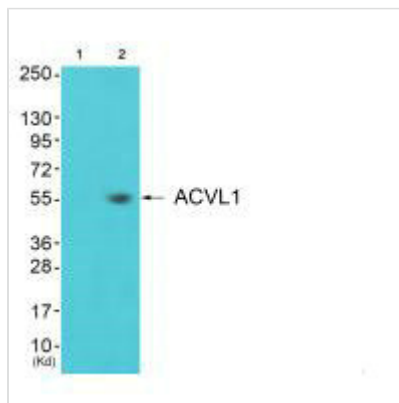
Immunohistochemistry analysis of paraffin-embedded human breast carcinoma tissue using ACVL1 antibody.



Immunofluorescence analysis of HeLa cells, using ACVL1 antibody.



Western blot analysis of extracts from K562 cells, using ACVL1 antibody.



Western blot analysis of extracts from 3T3 cells (Lane 2), using ACVL1 antibody. The lane on the left is treated with synthesized peptide.