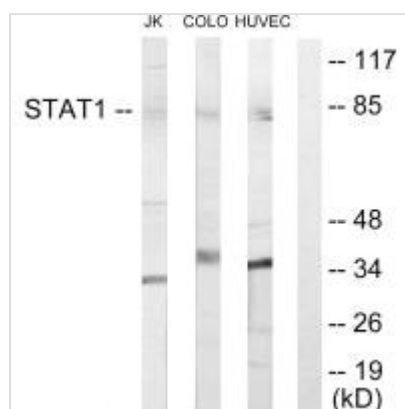




STAT1 Antibody

Product Code	CSB-PA697883
Storage	Upon receipt, store at -20°C or -80°C. Avoid repeated freeze.
Uniprot No.	P42224
Immunogen	Synthesized peptide derived from internal of Human STAT1.
Raised In	Rabbit
Species Reactivity	Human
Specificity	The antibody detects endogenous levels of total STAT1 protein.
Tested Applications	ELISA, WB; WB: 1:500-1:3000
Form	Rabbit IgG in phosphate buffered saline (without Mg ²⁺ and Ca ²⁺), pH 7.4, 150mM NaCl, 0.02% sodium azide and 50% glycerol.
Purification Method	The antibody was affinity-purified from rabbit antiserum by affinity-chromatography using epitope-specific immunogen.
Clonality	Polyclonal
Alias	Signal transducer and activator of transcription 1; Signal transducer and activator of transcription 1-alpha/beta; Transcription factor ISGF-3 components p91/p84;
Product Type	Polyclonal Antibody
Immunogen Species	Homo sapiens (Human)
Target Names	STAT1

Image



Western blot analysis of extracts from Jurkat cells, COLO205 cells and HUVEC cells, using STAT1 antibody.