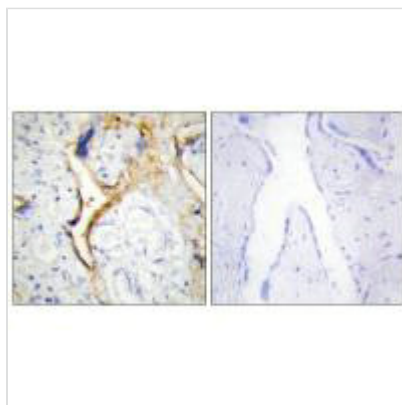




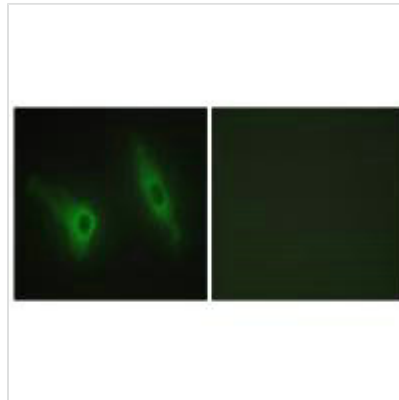
CSNK1E Antibody

Product Code	CSB-PA907561
Storage	Upon receipt, store at -20°C or -80°C. Avoid repeated freeze.
Uniprot No.	P49674
Immunogen	Synthesized peptide derived from internal of Human CKI-ε.
Raised In	Rabbit
Species Reactivity	Human,Mouse
Specificity	The antibody detects endogenous levels of total CKI-ε protein.
Tested Applications	ELISA,WB,IHC,IF;WB:1:500-1:3000,IHC:1:50-1:100,IF:1:100-1:500
Form	Rabbit IgG in phosphate buffered saline (without Mg ²⁺ and Ca ²⁺), pH 7.4, 150mM NaCl, 0.02% sodium azide and 50% glycerol.
Purification Method	The antibody was affinity-purified from rabbit antiserum by affinity-chromatography using epitope-specific immunogen.
Clonality	Polyclonal
Alias	CK1-epsilon; CKI-epsilon; CKIε; CSNK1E; Casein kinase I
Product Type	Polyclonal Antibody
Immunogen Species	Homo sapiens (Human)
Target Names	CSNK1E

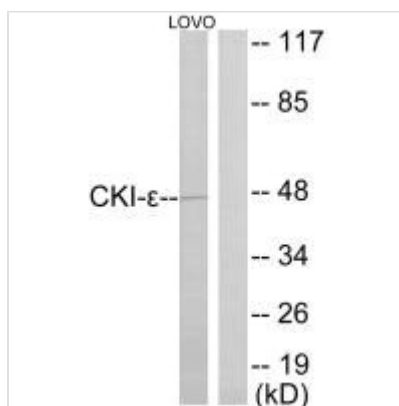
Image



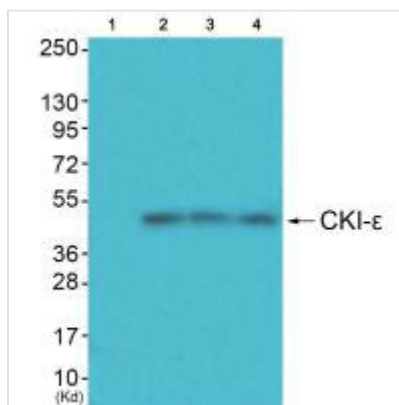
Immunohistochemistry analysis of paraffin-embedded human placenta tissue using CKI-ε antibody.



Immunofluorescence analysis of HeLa cells, using CKI-ε antibody.



Western blot analysis of extracts from LOVO cells, using CKI-ε antibody.



Western blot analysis of extracts from HuvEc cells (Lane 2), JK cells (Lane 3) and cos-7 cells (Lane 4), using CKI-ε antibody. The lane on the left is treated with synthesized peptide.