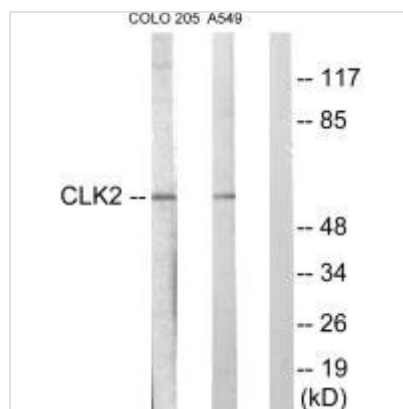




CLK2 Antibody

Product Code	CSB-PA562044
Storage	Upon receipt, store at -20°C or -80°C. Avoid repeated freeze.
Uniprot No.	P49760
Immunogen	Synthesized peptide derived from internal of Human CLK2.
Raised In	Rabbit
Species Reactivity	Human,Mouse,Rat
Specificity	The antibody detects endogenous levels of total CLK2 protein.
Tested Applications	ELISA,WB;WB:1:500-1:3000
Form	Rabbit IgG in phosphate buffered saline (without Mg ²⁺ and Ca ²⁺), pH 7.4, 150mM NaCl, 0.02% sodium azide and 50% glycerol.
Purification Method	The antibody was affinity-purified from rabbit antiserum by affinity-chromatography using epitope-specific immunogen.
Clonality	Polyclonal
Alias	CDC-like kinase 2; EC 2.7.12.1; kinase CLK2;
Product Type	Polyclonal Antibody
Immunogen Species	Homo sapiens (Human)
Target Names	CLK2

Image



Western blot analysis of extracts from COLO205 cells and A549 cells, using CLK2 antibody.

Usage

For Research Use Only. Not for use in diagnostic or therapeutic procedures.