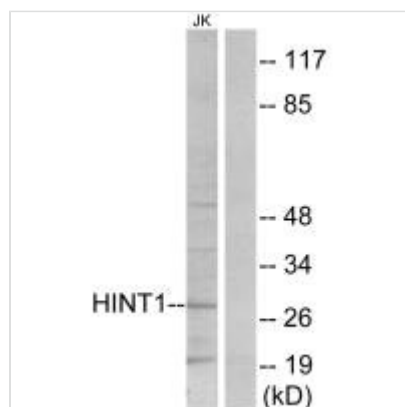




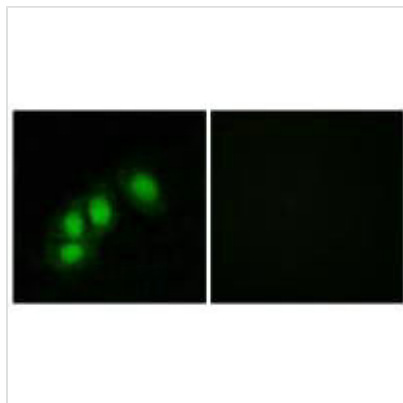
HINT1 Antibody

Product Code	CSB-PA546607
Storage	Upon receipt, store at -20°C or -80°C. Avoid repeated freeze.
Uniprot No.	P49773
Immunogen	Synthesized peptide derived from internal of Human HINT1.
Raised In	Rabbit
Species Reactivity	Human,Mouse,Rat
Specificity	The antibody detects endogenous levels of total HINT1 protein.
Tested Applications	ELISA,WB,IF;WB:1:500-1:3000,IF:1:100-1:500
Form	Rabbit IgG in phosphate buffered saline (without Mg ²⁺ and Ca ²⁺), pH 7.4, 150mM NaCl, 0.02% sodium azide and 50% glycerol.
Purification Method	The antibody was affinity-purified from rabbit antiserum by affinity-chromatography using epitope-specific immunogen.
Clonality	Polyclonal
Alias	adenosine 5-monophosphoramidase; EC 3.-.-.-; histidine triad nucleotide-binding 1; PKCI-1; PKCI1
Product Type	Polyclonal Antibody
Immunogen Species	Homo sapiens (Human)
Target Names	HINT1

Image



Western blot analysis of extracts from Jurkat cells, using HINT1 antibody.



Immunofluorescence analysis of HeLa cells,
using HINT1 antibody.