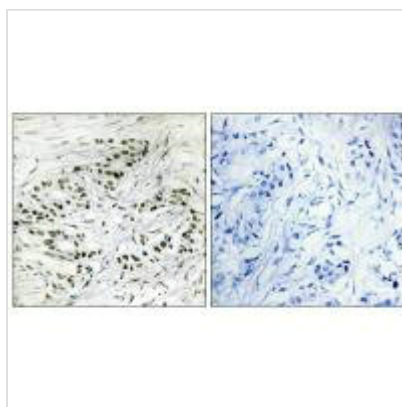




ERF Antibody

Product Code	CSB-PA447319
Storage	Upon receipt, store at -20°C or -80°C. Avoid repeated freeze.
Uniprot No.	P50548
Immunogen	Synthesized peptide derived from internal of Human ERF.
Raised In	Rabbit
Species Reactivity	Human,Mouse
Specificity	The antibody detects endogenous levels of total ERF protein.
Tested Applications	ELISA,IHC;IHC:1:50-1:100
Form	Rabbit IgG in phosphate buffered saline (without Mg ²⁺ and Ca ²⁺), pH 7.4, 150mM NaCl, 0.02% sodium azide and 50% glycerol.
Purification Method	The antibody was affinity-purified from rabbit antiserum by affinity-chromatography using epitope-specific immunogen.
Clonality	Polyclonal
Alias	ETS-domain transcription factor ERF; Ets2 repressor factor;
Product Type	Polyclonal Antibody
Immunogen Species	Homo sapiens (Human)
Target Names	ERF

Image



Immunohistochemistry analysis of paraffin-embedded human breast carcinoma tissue, using ERF antibody.