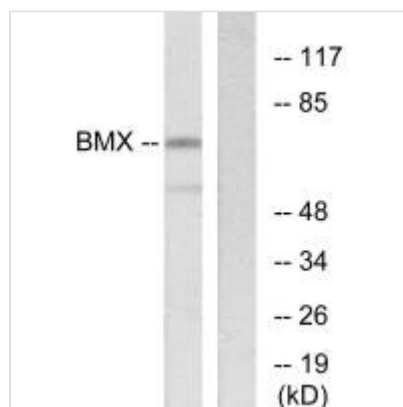




BMX Antibody

Product Code	CSB-PA991678
Storage	Upon receipt, store at -20°C or -80°C. Avoid repeated freeze.
Uniprot No.	P51813
Immunogen	Synthesized peptide derived from N-terminal of Human BMX.
Raised In	Rabbit
Species Reactivity	Human, Mouse
Specificity	The antibody detects endogenous levels of total BMX protein.
Tested Applications	ELISA, WB, IHC, IF; WB: 1:500-1:3000, IHC: 1:50-1:100, IF: 1:100-1:500
Form	Rabbit IgG in phosphate buffered saline (without Mg ²⁺ and Ca ²⁺), pH 7.4, 150mM NaCl, 0.02% sodium azide and 50% glycerol.
Purification Method	The antibody was affinity-purified from rabbit antiserum by affinity-chromatography using epitope-specific immunogen.
Clonality	Polyclonal
Alias	BMX; BMX NON-receptor tyrosine kinase; Bone marrow kinase BMX; Cytoplasmic BMX; EC 2.7.10.2
Product Type	Polyclonal Antibody
Immunogen Species	Homo sapiens (Human)
Target Names	BMX

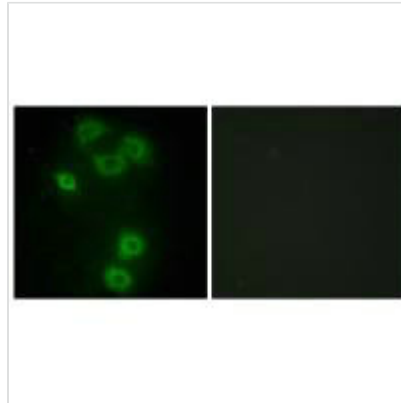
Image



Western blot analysis of extracts from COS-7 cells, using BMX antibody.



Immunohistochemistry analysis of paraffin-embedded human thyroid gland tissue using BMX antibody.



Immunofluorescence analysis of A549 cells, using BMX antibody.

Usage

For Research Use Only. Not for use in diagnostic or therapeutic procedures.