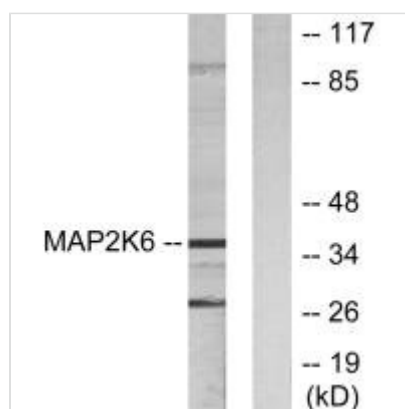




MAP2K6 Antibody

Product Code	CSB-PA985065
Storage	Upon receipt, store at -20°C or -80°C. Avoid repeated freeze.
Uniprot No.	P52564
Immunogen	Synthesized peptide derived from N-terminal of Human MAP2K6.
Raised In	Rabbit
Species Reactivity	Human, Mouse, Rat
Specificity	The antibody detects endogenous levels of total MAP2K6 protein.
Tested Applications	ELISA, WB; WB: 1:500-1:3000
Form	Rabbit IgG in phosphate buffered saline (without Mg ²⁺ and Ca ²⁺), pH 7.4, 150mM NaCl, 0.02% sodium azide and 50% glycerol.
Purification Method	The antibody was affinity-purified from rabbit antiserum by affinity-chromatography using epitope-specific immunogen.
Clonality	Polyclonal
Alias	Dual specificity mitogen-activated protein kinase kinase 6; EC 2.7.12.2; MAP kinase kinase 6; MAP2K6; MAPK/ERK kinase 6
Product Type	Polyclonal Antibody
Immunogen Species	Homo sapiens (Human)
Target Names	MAP2K6

Image



Western blot analysis of extracts from 293 cells, using MAP2K6 antibody.

Usage For Research Use Only. Not for use in diagnostic or therapeutic procedures.