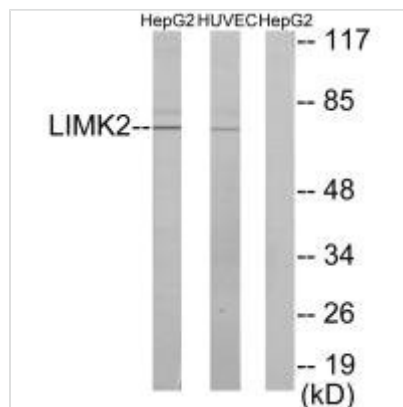




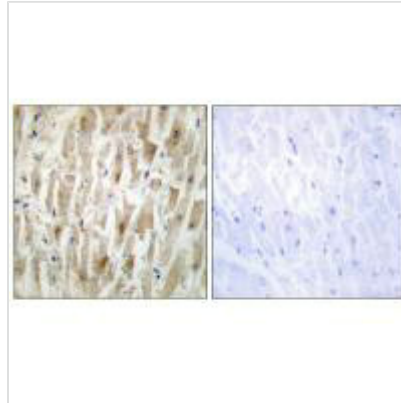
LIMK2 Antibody

Product Code	CSB-PA891322
Storage	Upon receipt, store at -20°C or -80°C. Avoid repeated freeze.
Uniprot No.	P53671
Immunogen	Synthesized peptide derived from internal of Human LIMK2.
Raised In	Rabbit
Species Reactivity	Human,Mouse,Rat
Specificity	The antibody detects endogenous levels of total LIMK2 protein.
Tested Applications	ELISA,WB,IHC,IF;WB:1:500-1:3000,IHC:1:50-1:100,IF:1:100-1:500
Form	Rabbit IgG in phosphate buffered saline (without Mg ²⁺ and Ca ²⁺), pH 7.4, 150mM NaCl, 0.02% sodium azide and 50% glycerol.
Purification Method	The antibody was affinity-purified from rabbit antiserum by affinity-chromatography using epitope-specific immunogen.
Clonality	Polyclonal
Alias	EC 2.7.11.1; LIM domain kinase 2; LIMK-2; kinase LIMK2;
Product Type	Polyclonal Antibody
Immunogen Species	Homo sapiens (Human)
Target Names	LIMK2

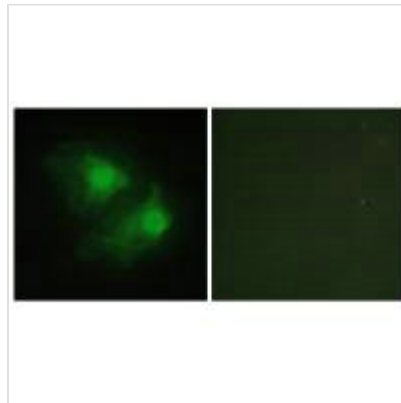
Image



Western blot analysis of extracts from HepG2 cells and HUVEC cells, using LIMK2 antibody.



Immunohistochemistry analysis of paraffin-embedded human heart tissue using LIMK2 antibody.



Immunofluorescence analysis of HeLa cells, using LIMK2 antibody.

Usage

For Research Use Only. Not for use in diagnostic or therapeutic procedures.