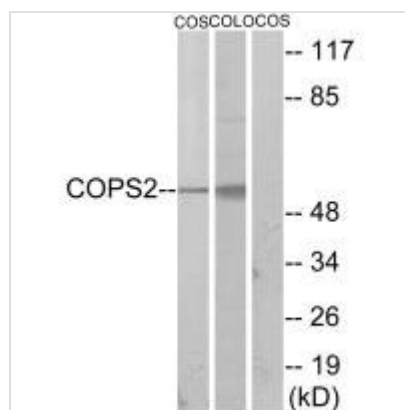




COPS2 Antibody

Product Code	CSB-PA231077
Storage	Upon receipt, store at -20°C or -80°C. Avoid repeated freeze.
Uniprot No.	P61201
Immunogen	Synthesized peptide derived from internal of Human COPS2.
Raised In	Rabbit
Species Reactivity	Human,Mouse,Rat
Specificity	The antibody detects endogenous levels of total COPS2 protein.
Tested Applications	ELISA,WB,IF;WB:1:500-1:3000,IF:1:100-1:500
Form	Rabbit IgG in phosphate buffered saline (without Mg ²⁺ and Ca ²⁺), pH 7.4, 150mM NaCl, 0.02% sodium azide and 50% glycerol.
Purification Method	The antibody was affinity-purified from rabbit antiserum by affinity-chromatography using epitope-specific immunogen.
Clonality	Polyclonal
Alias	ALIEN; COP9 constitutive photomorphogenic homolog subunit 2; COP9 constitutive photomorphogenic homolog subunit 2 (Arabidopsis); COP9 signalosome complex subunit 2; CSN2
Product Type	Polyclonal Antibody
Immunogen Species	Homo sapiens (Human)
Target Names	COPS2

Image



Western blot analysis of extracts from COS-7 cells and COLO205 cells, using COPS2 antibody.



Immunofluorescence analysis of A549 cells, using COPS2 antibody.

Usage

For Research Use Only. Not for use in diagnostic or therapeutic procedures.