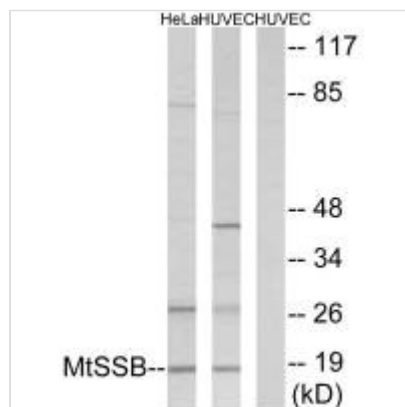




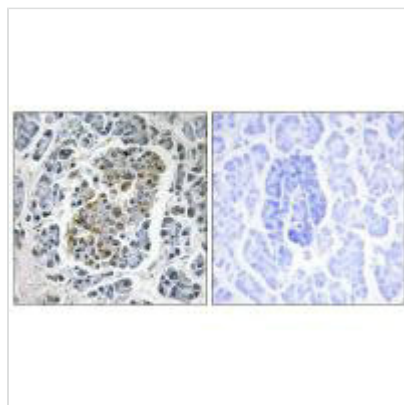
SSBP1 Antibody

Product Code	CSB-PA589424
Storage	Upon receipt, store at -20°C or -80°C. Avoid repeated freeze.
Uniprot No.	Q04837
Immunogen	Synthesized peptide derived from internal of Human MtSSB.
Raised In	Rabbit
Species Reactivity	Human,Mouse,Rat
Tested Applications	ELISA,WB,IHC,IF;WB:1:500-1:3000,IHC:1:50-1:100,IF:1:100-1:500
Form	Liquid
Storage Buffer	Liquid in PBS containing 50% glycerol, 0.5% BSA and 0.02% sodium azide.
Purification Method	The antibody was affinity-purified from rabbit antiserum by affinity-chromatography using epitope-specific immunogen.
Clonality	Polyclonal
Product Type	Polyclonal Antibody
Immunogen Species	Homo sapiens (Human)
Target Names	SSBP1

Image



Western blot analysis of extracts from HeLa cells and HUVEC cells, using MtSSB antibody.



Immunohistochemistry analysis of paraffin-embedded human pancreas tissue using MtSSB antibody.



Immunofluorescence analysis of A549 cells, using MtSSB antibody.

Usage

For Research Use Only. Not for use in diagnostic or therapeutic procedures.