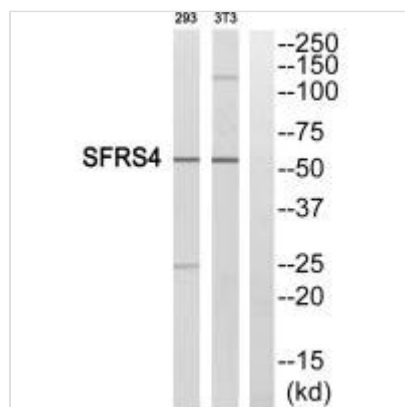




SRSF4 Antibody

Product Code	CSB-PA180306
Storage	Upon receipt, store at -20°C or -80°C. Avoid repeated freeze.
Uniprot No.	Q08170
Immunogen	Synthesized peptide derived from internal of Human SFRS4.
Raised In	Rabbit
Species Reactivity	Human, Mouse
Specificity	The antibody detects endogenous levels of total SFRS4 protein.
Tested Applications	ELISA, WB; WB: 1:500-1:3000
Form	Rabbit IgG in phosphate buffered saline (without Mg ²⁺ and Ca ²⁺), pH 7.4, 150mM NaCl, 0.02% sodium azide and 50% glycerol.
Purification Method	The antibody was affinity-purified from rabbit antiserum by affinity-chromatography using epitope-specific immunogen.
Clonality	Polyclonal
Alias	Splicing factor; arginine/serine-rich 4; Pre-mRNA-splicing factor SRP75; SRP001LB; SFRS4
Product Type	Polyclonal Antibody
Immunogen Species	Homo sapiens (Human)
Target Names	SRSF4

Image



Western blot analysis of extracts from LOVO cells, using SFRS4 antibody.

Usage For Research Use Only. Not for use in diagnostic or therapeutic procedures.