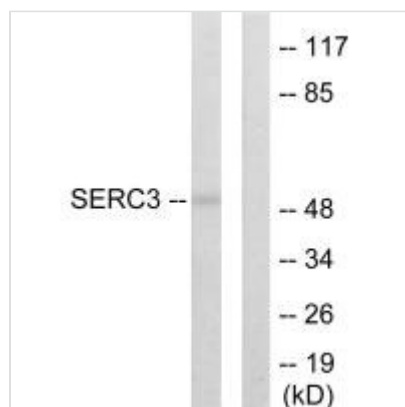




SERINC3 Antibody

Product Code	CSB-PA929736
Storage	Upon receipt, store at -20°C or -80°C. Avoid repeated freeze.
Uniprot No.	Q13530
Immunogen	Synthesized peptide derived from C-terminal of Human SERC3.
Raised In	Rabbit
Species Reactivity	Human,Mouse,Rat
Specificity	The antibody detects endogenous levels of total SERC3 protein.
Tested Applications	ELISA,WB,IF;WB:1:500-1:3000,IF:1:100-1:500
Form	Rabbit IgG in phosphate buffered saline (without Mg ²⁺ and Ca ²⁺), pH 7.4, 150mM NaCl, 0.02% sodium azide and 50% glycerol.
Purification Method	The antibody was affinity-purified from rabbit antiserum by affinity-chromatography using epitope-specific immunogen.
Clonality	Polyclonal
Alias	Serine incorporator 3; Tumor differentially expressed protein 1; SERINC3; DIFF33; TDE1
Product Type	Polyclonal Antibody
Immunogen Species	Homo sapiens (Human)
Target Names	SERINC3

Image



Western blot analysis of extracts from 293 cells, using SERC3 antibody.



Immunofluorescence analysis of HepG2 cells,
using SERC3 antibody.