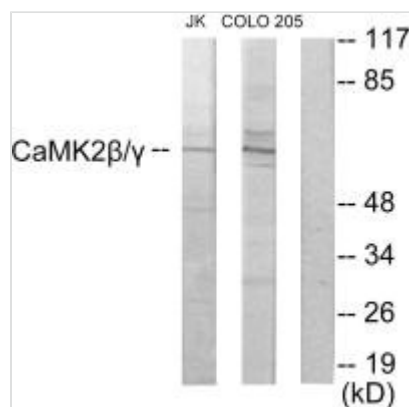




CAMK2G/CAMK2B Antibody

Product Code	CSB-PA181746
Storage	Upon receipt, store at -20°C or -80°C. Avoid repeated freeze.
Immunogen	Synthesized peptide derived from C-terminal of Human CaMK2β/γ.
Raised In	Rabbit
Species Reactivity	Human, Mouse, Rat
Specificity	The antibody detects endogenous levels of total CaMK2β/γ protein.
Tested Applications	ELISA, WB; WB: 1:500-1:3000
Form	Rabbit IgG in phosphate buffered saline (without Mg ²⁺ and Ca ²⁺), pH 7.4, 150mM NaCl, 0.02% sodium azide and 50% glycerol.
Purification Method	The antibody was affinity-purified from rabbit antiserum by affinity-chromatography using epitope-specific immunogen.
Clonality	Polyclonal
Alias	Calcium/calmodulin-dependent protein kinase type II gamma chain; EC 2.7.11.17; CaM-kinase II gamma chain; CaM kinase II subunit gamma; CaMK-II subunit gamma
Product Type	Polyclonal Antibody
Immunogen Species	Homo sapiens (Human)
Target Names	CAMK2G/CAMK2B
Accession NO.	Swiss-Prot: Q13555/Q13554 NCBI Gene ID: 818/816

Image



Western blot analysis of extracts from Jurkat cells and COLO205 cells, using CaMK2β/γ antibody.

Usage

For Research Use Only. Not for use in diagnostic or therapeutic procedures.