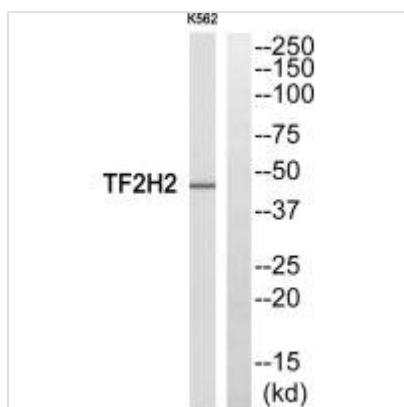




GTF2H2 Antibody

Product Code	CSB-PA714270
Storage	Upon receipt, store at -20°C or -80°C. Avoid repeated freeze.
Uniprot No.	Q13888
Immunogen	Synthesized peptide derived from N-terminal of Human TF2H2.
Raised In	Rabbit
Species Reactivity	Human,Mouse,Rat
Specificity	The antibody detects endogenous levels of total TF2H2 protein.
Tested Applications	ELISA,WB;WB:1:500-1:3000
Form	Rabbit IgG in phosphate buffered saline (without Mg ²⁺ and Ca ²⁺), pH 7.4, 150mM NaCl, 0.02% sodium azide and 50% glycerol.
Purification Method	The antibody was affinity-purified from rabbit antiserum by affinity-chromatography using epitope-specific immunogen.
Clonality	Polyclonal
Alias	TFIIH basal transcription factor complex p44 subunit; Basic transcription factor 2 44 kDa subunit; BTF2-p44; General transcription factor IIH polypeptide 2; GTF2H2
Product Type	Polyclonal Antibody
Immunogen Species	Homo sapiens (Human)
Target Names	GTF2H2

Image



Western blot analysis of extracts from COLO205 cells, using TF2H2 antibody.

Usage For Research Use Only. Not for use in diagnostic or therapeutic procedures.