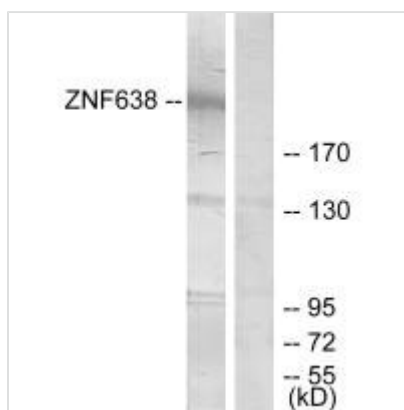




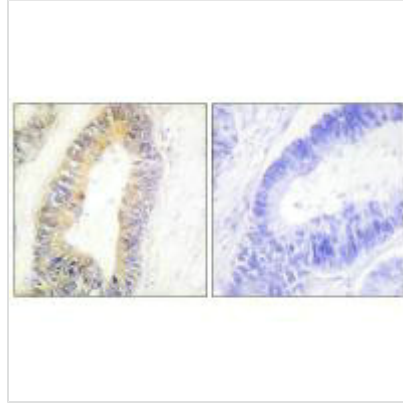
ZNF638 Antibody

Product Code	CSB-PA799270
Storage	Upon receipt, store at -20°C or -80°C. Avoid repeated freeze.
Uniprot No.	Q14966
Immunogen	Synthesized peptide derived from internal of Human ZNF638.
Raised In	Rabbit
Species Reactivity	Human
Specificity	The antibody detects endogenous levels of total ZNF638 protein.
Tested Applications	ELISA,WB,IHC;WB:1:500-1:3000,IHC:1:50-1:100
Form	Rabbit IgG in phosphate buffered saline (without Mg ²⁺ and Ca ²⁺), pH 7.4, 150mM NaCl, 0.02% sodium azide and 50% glycerol.
Purification Method	The antibody was affinity-purified from rabbit antiserum by affinity-chromatography using epitope-specific immunogen.
Clonality	Polyclonal
Alias	Zinc finger protein 638; Nuclear protein 220; Zinc finger matrin-like protein; Cutaneous T-cell lymphoma-associated antigen se33-1; CTCL tumor antigen se33-1
Product Type	Polyclonal Antibody
Immunogen Species	Homo sapiens (Human)
Target Names	ZNF638

Image



Western blot analysis of extracts from HepG2 cells, treated with serum (20%, 15mins), using ZNF638 antibody.



Immunohistochemistry analysis of paraffin-embedded human colon carcinoma tissue using ZNF638 antibody.

Usage

For Research Use Only. Not for use in diagnostic or therapeutic procedures.