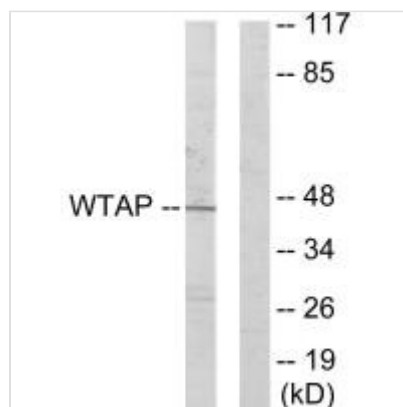




WTAP Antibody

Product Code	CSB-PA722026
Storage	Upon receipt, store at -20°C or -80°C. Avoid repeated freeze.
Uniprot No.	Q15007
Immunogen	Synthesized peptide derived from C-terminal of Human WTAP.
Raised In	Rabbit
Species Reactivity	Human,Mouse
Specificity	The antibody detects endogenous levels of total WTAPv protein.
Tested Applications	ELISA,WB;WB:1:500-1:3000
Form	Rabbit IgG in phosphate buffered saline (without Mg ²⁺ and Ca ²⁺), pH 7.4, 150mM NaCl, 0.02% sodium azide and 50% glycerol.
Purification Method	The antibody was affinity-purified from rabbit antiserum by affinity-chromatography using epitope-specific immunogen.
Clonality	Polyclonal
Alias	KIAA0105; Putative pre-mRNA splicing regulator female-lethal (2D) homolog; WT1-associated protein; Wilms tumor 1-associating protein;
Product Type	Polyclonal Antibody
Immunogen Species	Homo sapiens (Human)
Target Names	WTAP

Image



Western blot analysis of extracts from HUVEC cells, using WTAP antibody.