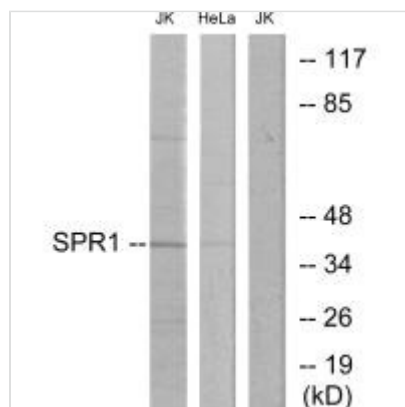




GPR68 Antibody

Product Code	CSB-PA225320
Storage	Upon receipt, store at -20°C or -80°C. Avoid repeated freeze.
Uniprot No.	Q15743
Immunogen	Synthesized peptide derived from internal of Human SPR1.
Raised In	Rabbit
Species Reactivity	Human,Mouse
Specificity	The antibody detects endogenous levels of total SPR1 protein.
Tested Applications	ELISA,WB;WB:1:500-1:3000
Form	Rabbit IgG in phosphate buffered saline (without Mg ²⁺ and Ca ²⁺), pH 7.4, 150mM NaCl, 0.02% sodium azide and 50% glycerol.
Purification Method	The antibody was affinity-purified from rabbit antiserum by affinity-chromatography using epitope-specific immunogen.
Clonality	Polyclonal
Alias	Sphingosylphosphorylcholine receptor; Ovarian cancer G-protein coupled receptor 1; OGR-1; G-protein coupled receptor 68; GPR12A
Product Type	Polyclonal Antibody
Immunogen Species	Homo sapiens (Human)
Target Names	GPR68

Image



Western blot analysis of extracts from Jurkat cells and HeLa cells, using SPR1 antibody.