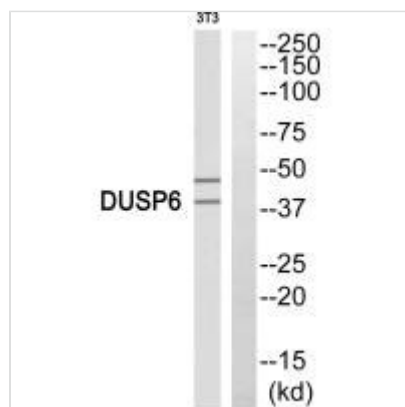




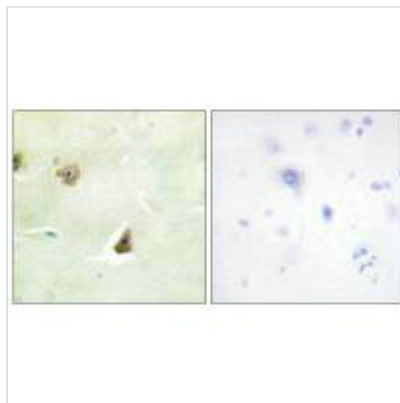
DUSP6 Antibody

Product Code	CSB-PA230795
Storage	Upon receipt, store at -20°C or -80°C. Avoid repeated freeze.
Uniprot No.	Q16828
Immunogen	Synthesized peptide derived from internal of Human DUSP6.
Raised In	Rabbit
Species Reactivity	Human,Mouse
Specificity	The antibody detects endogenous levels of total DUSP6 protein.
Tested Applications	ELISA,WB,IHC,IF;WB:1:500-1:3000,IHC:1:50-1:100,IF:1:100-1:500
Form	Rabbit IgG in phosphate buffered saline (without Mg ²⁺ and Ca ²⁺), pH 7.4, 150mM NaCl, 0.02% sodium azide and 50% glycerol.
Purification Method	The antibody was affinity-purified from rabbit antiserum by affinity-chromatography using epitope-specific immunogen.
Clonality	Polyclonal
Alias	dual specificity protein phosphatase 6; dual specificity protein phosphatase PYST1; DUS6; DUSP6; EC 3.1.3.16
Product Type	Polyclonal Antibody
Immunogen Species	Homo sapiens (Human)
Target Names	DUSP6

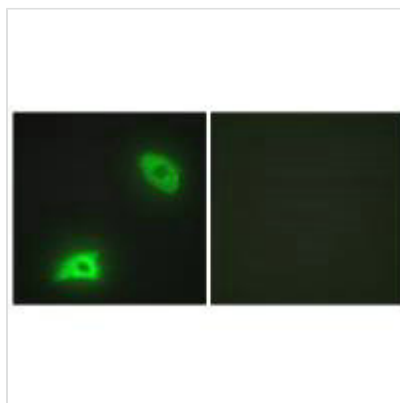
Image



Western blot analysis of extracts from 3T3 cells, using DUSP6 antibody.



Immunohistochemistry analysis of paraffin-embedded human brain tissue, using DUSP6 antibody.



Immunofluorescence analysis of HeLa cells, using DUSP6 antibody.