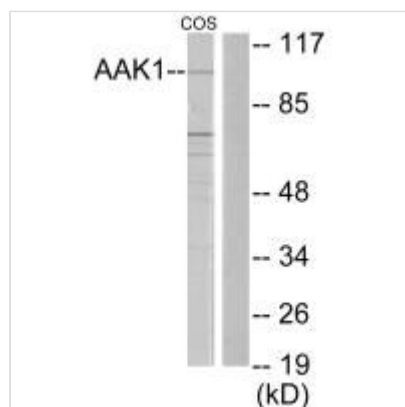




AAK1 Antibody

Product Code	CSB-PA903610
Storage	Upon receipt, store at -20°C or -80°C. Avoid repeated freeze.
Uniprot No.	Q2M2I8
Immunogen	Synthesized peptide derived from internal of Human AAK1.
Raised In	Rabbit
Species Reactivity	Human,Mouse,Rat
Specificity	The antibody detects endogenous levels of total AAK1 protein.
Tested Applications	ELISA,WB;WB:1:500-1:3000
Form	Rabbit IgG in phosphate buffered saline (without Mg ²⁺ and Ca ²⁺), pH 7.4, 150mM NaCl, 0.02% sodium azide and 50% glycerol.
Purification Method	The antibody was affinity-purified from rabbit antiserum by affinity-chromatography using epitope-specific immunogen.
Clonality	Polyclonal
Alias	AP2-associated protein kinase 1; EC 2.7.11.1; Adaptor-associated kinase 1; AAK1; KIAA1048
Product Type	Polyclonal Antibody
Immunogen Species	Homo sapiens (Human)
Target Names	AAK1

Image



Western blot analysis of extracts from COS7 cells, using AAK1 antibody.