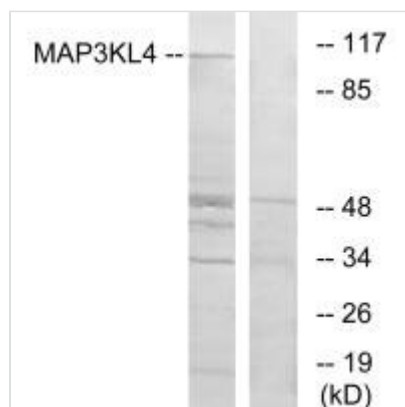




MLK4 Antibody

Product Code	CSB-PA259340
Storage	Upon receipt, store at -20°C or -80°C. Avoid repeated freeze.
Uniprot No.	Q5TCX8
Immunogen	Synthesized peptide derived from internal of Human MAP3KL4.
Raised In	Rabbit
Species Reactivity	Human
Specificity	The antibody detects endogenous levels of total MAP3KL4 protein.
Tested Applications	ELISA,WB;WB:1:500-1:3000
Form	Rabbit IgG in phosphate buffered saline (without Mg ²⁺ and Ca ²⁺), pH 7.4, 150mM NaCl, 0.02% sodium azide and 50% glycerol.
Purification Method	The antibody was affinity-purified from rabbit antiserum by affinity-chromatography using epitope-specific immunogen.
Clonality	Polyclonal
Alias	Mitogen-activated protein kinase kinase kinase; EC 2.7.11.25; Mixed lineage kinase 4; MLK4; KIAA1804
Product Type	Polyclonal Antibody
Immunogen Species	Homo sapiens (Human)
Target Names	MAP3K21

Image



Western blot analysis of extracts from HT-29 cells, using MAP3KL4 antibody.