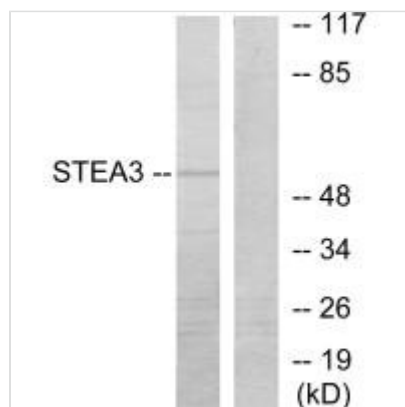




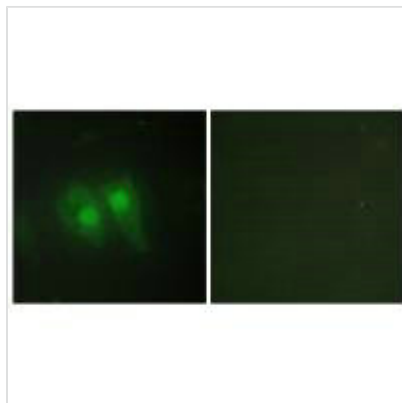
STEAP3 Antibody

Product Code	CSB-PA235551
Storage	Upon receipt, store at -20°C or -80°C. Avoid repeated freeze.
Uniprot No.	Q658P3
Immunogen	Synthesized peptide derived from internal of Human STEA3.
Raised In	Rabbit
Species Reactivity	Human,Mouse,Rat
Specificity	The antibody detects endogenous levels of total STEA3 protein.
Tested Applications	ELISA,WB,IF;WB:1:500-1:3000,IF:1:100-1:500
Form	Rabbit IgG in phosphate buffered saline (without Mg ²⁺ and Ca ²⁺), pH 7.4, 150mM NaCl, 0.02% sodium azide and 50% glycerol.
Purification Method	The antibody was affinity-purified from rabbit antiserum by affinity-chromatography using epitope-specific immunogen.
Clonality	Polyclonal
Alias	Metalloreductase STEAP3; EC 1.16.1.-; Six-transmembrane epithelial antigen of prostate 3; Tumor suppressor-activated pathway protein 6; hTSAP6
Product Type	Polyclonal Antibody
Immunogen Species	Homo sapiens (Human)
Target Names	STEAP3

Image



Western blot analysis of extracts from COLO205 cells, using STEA3 antibody.



Immunofluorescence analysis of HeLa cells,
using STEA3 antibody.