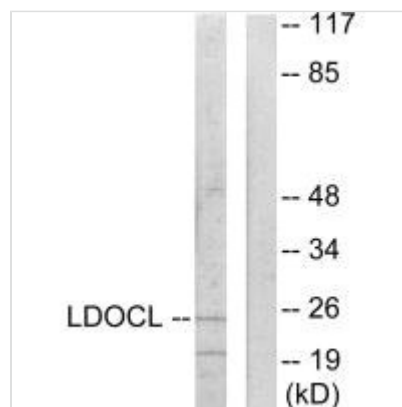




LDOC1L Antibody

Product Code	CSB-PA250690
Storage	Upon receipt, store at -20°C or -80°C. Avoid repeated freeze.
Uniprot No.	Q6ICC9
Immunogen	Synthesized peptide derived from internal of Human LDOCL.
Raised In	Rabbit
Species Reactivity	Human, Mouse
Specificity	The antibody detects endogenous levels of total LDOCL protein.
Tested Applications	ELISA, WB; WB: 1:500-1:3000
Form	Rabbit IgG in phosphate buffered saline (without Mg ²⁺ and Ca ²⁺), pH 7.4, 150mM NaCl, 0.02% sodium azide and 50% glycerol.
Purification Method	The antibody was affinity-purified from rabbit antiserum by affinity-chromatography using epitope-specific immunogen.
Clonality	Polyclonal
Alias	Protein LDOC1L; Leucine zipper protein down-regulated in cancer cells-like; Mammalian retrotransposon-derived protein 6; LDOC1L; MAR6
Product Type	Polyclonal Antibody
Immunogen Species	Homo sapiens (Human)
Target Names	RTL6

Image



Western blot analysis of extracts from COLO205 cells, using LDOCL antibody.

Usage

For Research Use Only. Not for use in diagnostic or therapeutic procedures.