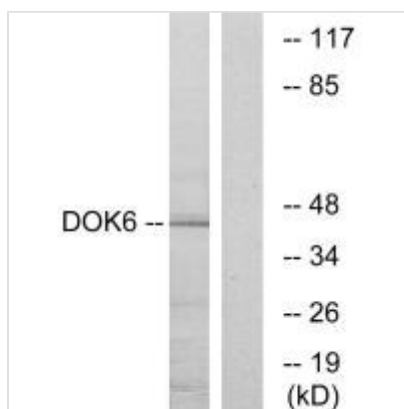




DOK6 Antibody

Product Code	CSB-PA616052
Storage	Upon receipt, store at -20°C or -80°C. Avoid repeated freeze.
Uniprot No.	Q6PKX4
Immunogen	Synthesized peptide derived from internal of Human DOK6.
Raised In	Rabbit
Species Reactivity	Human,Mouse
Specificity	The antibody detects endogenous levels of total DOK6 protein.
Tested Applications	ELISA,WB,IF;WB:1:500-1:3000,IF:1:100-1:500
Form	Rabbit IgG in phosphate buffered saline (without Mg ²⁺ and Ca ²⁺), pH 7.4, 150mM NaCl, 0.02% sodium azide and 50% glycerol.
Purification Method	The antibody was affinity-purified from rabbit antiserum by affinity-chromatography using epitope-specific immunogen.
Clonality	Polyclonal
Alias	Downstream of tyrosine kinase 6; Docking protein 6; DOK6; DOK5L;
Product Type	Polyclonal Antibody
Immunogen Species	Homo sapiens (Human)
Target Names	DOK6

Image



Western blot analysis of extracts from COLO cells, using DOK6 antibody.



Immunofluorescence analysis of A549 cells, using DOK6 antibody.

Usage

For Research Use Only. Not for use in diagnostic or therapeutic procedures.