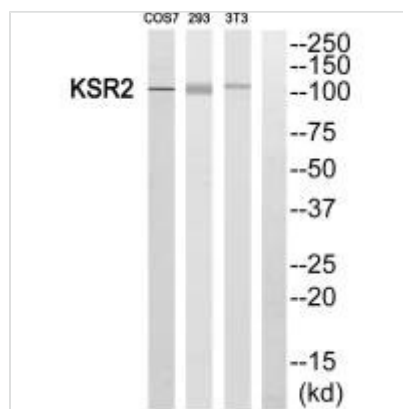




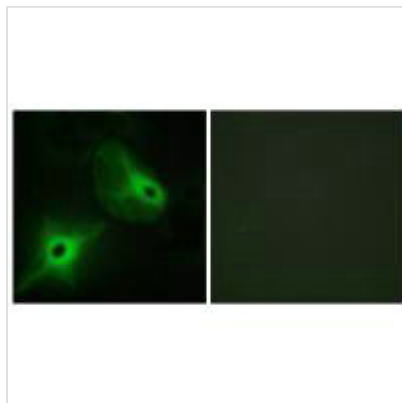
KSR2 Antibody

Product Code	CSB-PA581207
Storage	Upon receipt, store at -20°C or -80°C. Avoid repeated freeze.
Uniprot No.	Q6VAB6
Immunogen	Synthesized peptide derived from internal of Human KSR2.
Raised In	Rabbit
Species Reactivity	Human,Mouse
Specificity	The antibody detects endogenous levels of total KSR2 protein.
Tested Applications	ELISA,WB,IF;WB:1:500-1:3000,IF:1:100-1:500
Form	Rabbit IgG in phosphate buffered saline (without Mg ²⁺ and Ca ²⁺), pH 7.4, 150mM NaCl, 0.02% sodium azide and 50% glycerol.
Purification Method	The antibody was affinity-purified from rabbit antiserum by affinity-chromatography using epitope-specific immunogen.
Clonality	Polyclonal
Alias	hKSR2; Kinase suppressor of Ras 2; KSR2;
Product Type	Polyclonal Antibody
Immunogen Species	Homo sapiens (Human)
Target Names	KSR2

Image



Western blot analysis of extracts from COS7, 293 and 3T3 cells, using KSR2 antibody.



Immunofluorescence analysis of HeLa cells,
using KSR2 antibody.