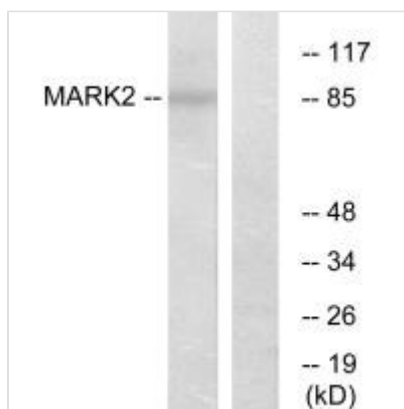




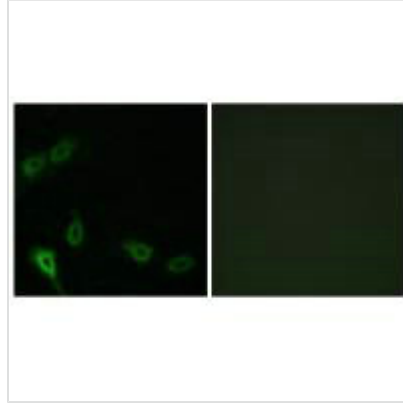
MARK2 Antibody

Product Code	CSB-PA211429
Storage	Upon receipt, store at -20°C or -80°C. Avoid repeated freeze.
Uniprot No.	Q7KZI7
Immunogen	Synthesized peptide derived from N-terminal of Human MARK2.
Raised In	Rabbit
Species Reactivity	Human,Mouse,Rat
Specificity	The antibody detects endogenous levels of total MARK2 protein.
Tested Applications	ELISA,WB,IF;WB:1:500-1:3000,IF:1:100-1:500
Form	Rabbit IgG in phosphate buffered saline (without Mg ²⁺ and Ca ²⁺), pH 7.4, 150mM NaCl, 0.02% sodium azide and 50% glycerol.
Purification Method	The antibody was affinity-purified from rabbit antiserum by affinity-chromatography using epitope-specific immunogen.
Clonality	Polyclonal
Alias	EC 2.7.11.1; ELKL motif kinase 1; EMK; EMK1; MAP/microtubule affinity-regulating kinase 2
Product Type	Polyclonal Antibody
Immunogen Species	Homo sapiens (Human)
Target Names	MARK2

Image



Western blot analysis of extracts from COS-7 cells, using MARK2 antibody.



Immunofluorescence analysis of A549 cells, using MARK2 antibody.

Usage

For Research Use Only. Not for use in diagnostic or therapeutic procedures.