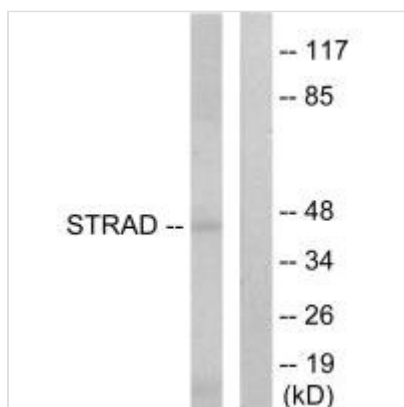




STRADA Antibody

Product Code	CSB-PA235298
Storage	Upon receipt, store at -20°C or -80°C. Avoid repeated freeze.
Uniprot No.	Q7RTN6
Immunogen	Synthesized peptide derived from internal of Human STRAD.
Raised In	Rabbit
Species Reactivity	Human, Mouse
Specificity	The antibody detects endogenous levels of total STRAD protein.
Tested Applications	ELISA, WB; WB: 1:500-1:3000
Form	Rabbit IgG in phosphate buffered saline (without Mg ²⁺ and Ca ²⁺), pH 7.4, 150mM NaCl, 0.02% sodium azide and 50% glycerol.
Purification Method	The antibody was affinity-purified from rabbit antiserum by affinity-chromatography using epitope-specific immunogen.
Clonality	Polyclonal
Alias	STE20-related adapter protein; STRAD alpha; Serologically defined breast cancer antigen NY-BR-96; STRAD; LYK5
Product Type	Polyclonal Antibody
Immunogen Species	Homo sapiens (Human)
Target Names	STRADA

Image



Western blot analysis of extracts from HepG2 cells, using STRAD antibody.

Usage For Research Use Only. Not for use in diagnostic or therapeutic procedures.