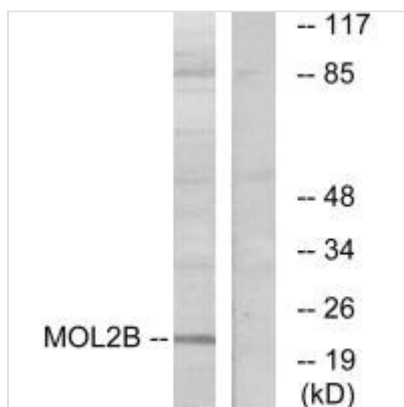




MOB3B Antibody

Product Code	CSB-PA228977
Storage	Upon receipt, store at -20°C or -80°C. Avoid repeated freeze.
Uniprot No.	Q86TA1
Immunogen	Synthesized peptide derived from internal of Human MOL2B.
Raised In	Rabbit
Species Reactivity	Human, Mouse
Specificity	The antibody detects endogenous levels of total MOL2B protein.
Tested Applications	ELISA, WB; WB: 1:500-1:3000
Form	Rabbit IgG in phosphate buffered saline (without Mg ²⁺ and Ca ²⁺), pH 7.4, 150mM NaCl, 0.02% sodium azide and 50% glycerol.
Purification Method	The antibody was affinity-purified from rabbit antiserum by affinity-chromatography using epitope-specific immunogen.
Clonality	Polyclonal
Alias	Mps one binder kinase activator-like 2B; Mob1 homolog 2b; Protein Mob3B; MOBKL2B; MOB3B
Product Type	Polyclonal Antibody
Immunogen Species	Homo sapiens (Human)
Target Names	MOB3B

Image



Western blot analysis of extracts from COLO cells, using MOL2B antibody.

Usage For Research Use Only. Not for use in diagnostic or therapeutic procedures.