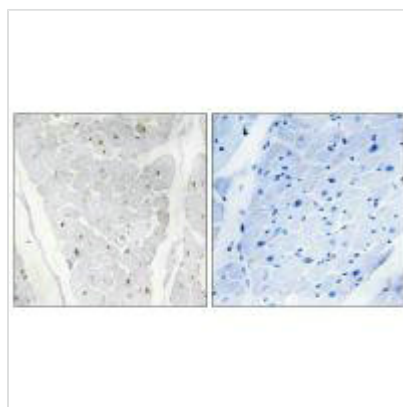




ALPK2 Antibody

Product Code	CSB-PA042187
Storage	Upon receipt, store at -20°C or -80°C. Avoid repeated freeze.
Uniprot No.	Q86TB3
Immunogen	Synthesized peptide derived from internal of Human ALPK2.
Raised In	Rabbit
Species Reactivity	Human
Specificity	The antibody detects endogenous levels of total ALPK2 protein.
Tested Applications	ELISA,IHC;IHC:1:50-1:100
Form	Rabbit IgG in phosphate buffered saline (without Mg ²⁺ and Ca ²⁺), pH 7.4, 150mM NaCl, 0.02% sodium azide and 50% glycerol.
Purification Method	The antibody was affinity-purified from rabbit antiserum by affinity-chromatography using epitope-specific immunogen.
Clonality	Polyclonal
Alias	Alpha-protein kinase 2; EC 2.7.11.-; Heart alpha-protein kinase; ALPK2; HAK
Product Type	Polyclonal Antibody
Immunogen Species	Homo sapiens (Human)
Target Names	ALPK2

Image



Immunohistochemistry analysis of paraffin-embedded human heart tissue, using ALPK2 antibody.

Usage

For Research Use Only. Not for use in diagnostic or therapeutic procedures.