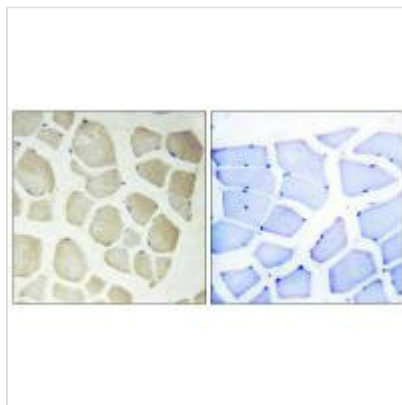




CDKL3 Antibody

Product Code	CSB-PA150181
Storage	Upon receipt, store at -20°C or -80°C. Avoid repeated freeze.
Uniprot No.	Q8IVW4
Immunogen	Synthesized peptide derived from internal of Human CDKL3.
Raised In	Rabbit
Species Reactivity	Human
Specificity	The antibody detects endogenous levels of total CDKL3 protein.
Tested Applications	ELISA,IHC;IHC:1:50-1:100
Form	Rabbit IgG in phosphate buffered saline (without Mg ²⁺ and Ca ²⁺), pH 7.4, 150mM NaCl, 0.02% sodium azide and 50% glycerol.
Purification Method	The antibody was affinity-purified from rabbit antiserum by affinity-chromatography using epitope-specific immunogen.
Clonality	Polyclonal
Alias	Cyclin-dependent kinase-like 3; EC 2.7.11.22; Serine/threonine protein kinase NKIAMRE; CDKL3; NKIAMRE
Product Type	Polyclonal Antibody
Immunogen Species	Homo sapiens (Human)
Target Names	CDKL3

Image



Immunohistochemistry analysis of paraffin-embedded human skeletal muscle tissue, using CDKL3 antibody.