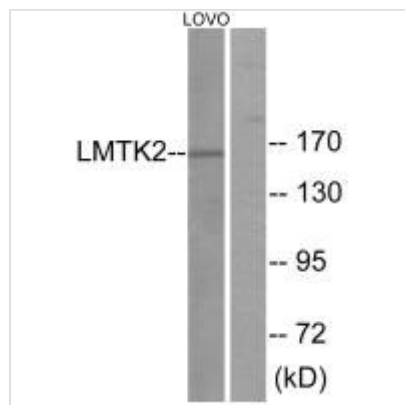




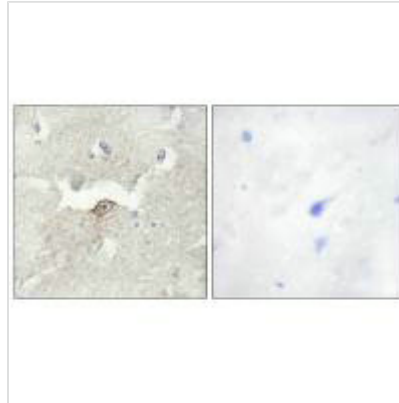
LMTK2 Antibody

Product Code	CSB-PA022099
Storage	Upon receipt, store at -20°C or -80°C. Avoid repeated freeze.
Uniprot No.	Q8IWU2
Immunogen	Synthesized peptide derived from internal of Human LMTK2.
Raised In	Rabbit
Species Reactivity	Human
Specificity	The antibody detects endogenous levels of total LMTK2 protein.
Tested Applications	ELISA,WB,IHC,IF;WB:1:500-1:3000,IHC:1:50-1:100,IF:1:100-1:500
Form	Rabbit IgG in phosphate buffered saline (without Mg ²⁺ and Ca ²⁺), pH 7.4, 150mM NaCl, 0.02% sodium azide and 50% glycerol.
Purification Method	The antibody was affinity-purified from rabbit antiserum by affinity-chromatography using epitope-specific immunogen.
Clonality	Polyclonal
Alias	2900041G10Rik; BREK; cprk; EC 2.7.11.1; KIAA1079
Product Type	Polyclonal Antibody
Immunogen Species	Homo sapiens (Human)
Target Names	LMTK2

Image



Western blot analysis of extracts from LOVO cells, using LMTK2 antibody.



Immunohistochemistry analysis of paraffin-embedded human brain tissue using LMTK2 antibody.



Immunofluorescence analysis of HepG2 cells, using LMTK2 antibody.

Usage

For Research Use Only. Not for use in diagnostic or therapeutic procedures.