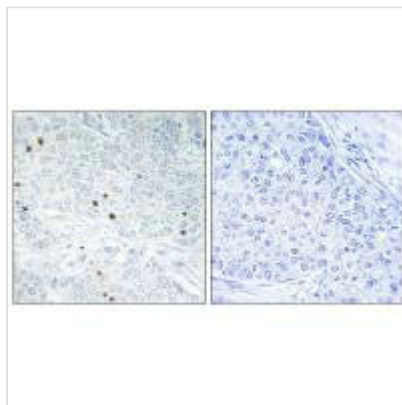




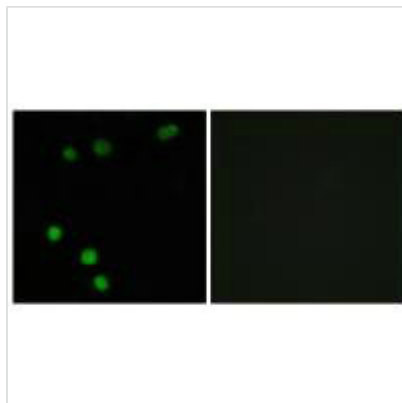
# TP53INP2 Antibody

<b>Product Code</b>	CSB-PA117430
<b>Storage</b>	Upon receipt, store at -20°C or -80°C. Avoid repeated freeze.
<b>Uniprot No.</b>	Q8CFU8
<b>Immunogen</b>	Synthesized peptide derived from internal of Human TP53INP2.
<b>Raised In</b>	Rabbit
<b>Species Reactivity</b>	Human,Mouse
<b>Specificity</b>	The antibody detects endogenous levels of total TP53INP2 protein.
<b>Tested Applications</b>	ELISA,IHC,IF;IHC:1:50-1:100,IF:1:100-1:500
<b>Form</b>	Rabbit IgG in phosphate buffered saline (without Mg <sup>2+</sup> and Ca <sup>2+</sup> ), pH 7.4, 150mM NaCl, 0.02% sodium azide and 50% glycerol.
<b>Purification Method</b>	The antibody was affinity-purified from rabbit antiserum by affinity-chromatography using epitope-specific immunogen.
<b>Clonality</b>	Polyclonal
<b>Alias</b>	p53-inducible protein U; PIG-U; PINH; T53I2; tumor protein p53 inducible nuclear protein 2
<b>Product Type</b>	Polyclonal Antibody
<b>Immunogen Species</b>	Mus musculus (Mouse)
<b>Target Names</b>	Tp53inp2

## Image



Immunohistochemistry analysis of paraffin-embedded human breast carcinoma tissue, using TP53INP2 antibody.



Immunofluorescence analysis of MCF-7 cells,  
using TP53INP2 antibody.