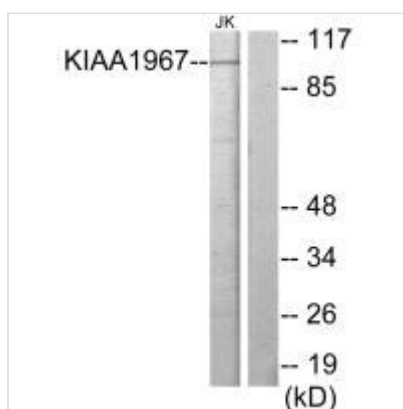




CCAR2 Antibody

Product Code	CSB-PA084028
Storage	Upon receipt, store at -20°C or -80°C. Avoid repeated freeze.
Uniprot No.	Q8N163
Immunogen	Synthesized peptide derived from internal of Human KIAA1967.
Raised In	Rabbit
Species Reactivity	Human
Specificity	The antibody detects endogenous levels of total KIAA1967 protein.
Tested Applications	ELISA, WB; WB: 1:500-1:3000
Form	Rabbit IgG in phosphate buffered saline (without Mg ²⁺ and Ca ²⁺), pH 7.4, 150mM NaCl, 0.02% sodium azide and 50% glycerol.
Purification Method	The antibody was affinity-purified from rabbit antiserum by affinity-chromatography using epitope-specific immunogen.
Clonality	Polyclonal
Alias	Protein KIAA1967; Deleted in breast cancer gene 1 protein; DBC.1; DBC-1; p30 DBC
Product Type	Polyclonal Antibody
Immunogen Species	Homo sapiens (Human)
Target Names	CCAR2

Image



Western blot analysis of extracts from Jurkat cells, using KIAA1967 antibody.

Usage For Research Use Only. Not for use in diagnostic or therapeutic procedures.