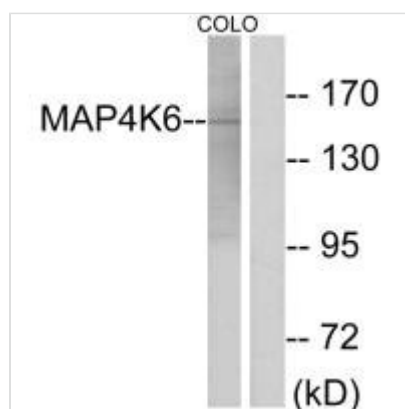




MINK1 Antibody

Product Code	CSB-PA170472
Storage	Upon receipt, store at -20°C or -80°C. Avoid repeated freeze.
Uniprot No.	Q8N4C8
Immunogen	Synthesized peptide derived from internal of Human MAP4K6.
Raised In	Rabbit
Species Reactivity	Human,Mouse
Specificity	The antibody detects endogenous levels of total MAP4K6 protein.
Tested Applications	ELISA,WB;WB:1:500-1:3000
Form	Rabbit IgG in phosphate buffered saline (without Mg ²⁺ and Ca ²⁺), pH 7.4, 150mM NaCl, 0.02% sodium azide and 50% glycerol.
Purification Method	The antibody was affinity-purified from rabbit antiserum by affinity-chromatography using epitope-specific immunogen.
Clonality	Polyclonal
Alias	EC 2.7.11.1; Mitogen-activated protein kinase kinase kinase 6; MAPK/ERK kinase kinase 6; MEK kinase kinase 6; MEKKK 6
Product Type	Polyclonal Antibody
Immunogen Species	Homo sapiens (Human)
Target Names	MINK1

Image



Western blot analysis of extracts from COLO cells, using MAP4K6 antibody.