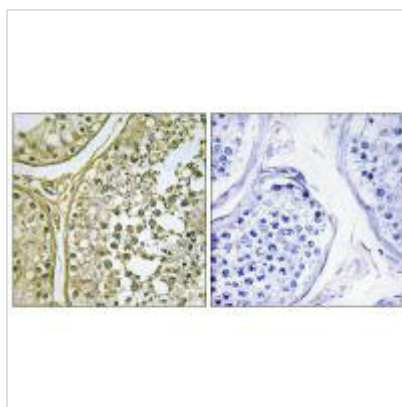




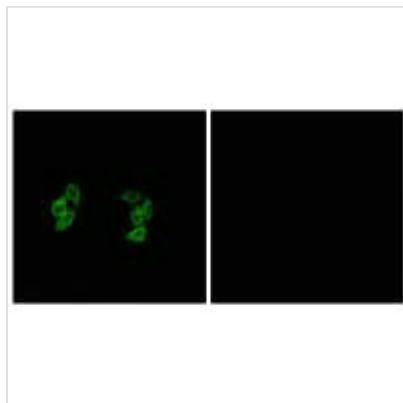
CSNK1A1L/CSNK1A1 Antibody

Product Code	CSB-PA059750
Storage	Upon receipt, store at -20°C or -80°C. Avoid repeated freeze.
Immunogen	Synthesized peptide derived from internal of Human CKI- α 1/L.
Raised In	Rabbit
Species Reactivity	Human, Mouse
Specificity	The antibody detects endogenous levels of total CKI- α 1/L protein.
Tested Applications	ELISA, IHC, IF; IHC: 1:50-1:100, IF: 1:100-1:500
Form	Rabbit IgG in phosphate buffered saline (without Mg ²⁺ and Ca ²⁺), pH 7.4, 150mM NaCl, 0.02% sodium azide and 50% glycerol.
Purification Method	The antibody was affinity-purified from rabbit antiserum by affinity-chromatography using epitope-specific immunogen.
Clonality	Polyclonal
Alias	CK1; CK1-alpha2; CKI-alpha; CSNK1A1L; EC 2.7.11.1
Product Type	Polyclonal Antibody
Immunogen Species	Homo sapiens (Human)
Target Names	CSNK1A1L/CSNK1A1
Accession NO.	Swiss-Prot: Q8N752/P48729 NCBI Gene ID: 122011/1452

Image



Immunohistochemistry analysis of paraffin-embedded human testis tissue, using CKI- α 1/L antibody.



Immunofluorescence analysis of A549 cells, using CKI-α1/L antibody.

Usage

For Research Use Only. Not for use in diagnostic or therapeutic procedures.