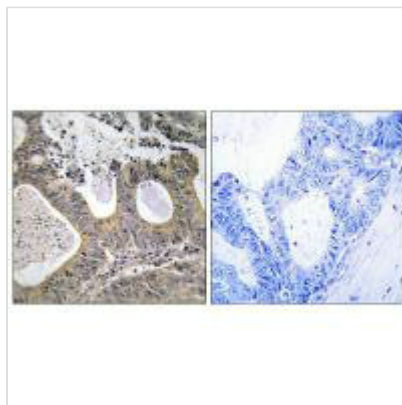




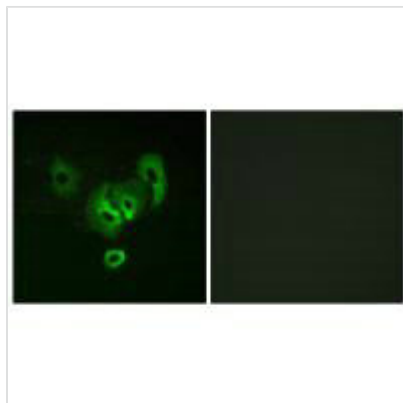
# STEAP2 Antibody

<b>Product Code</b>	CSB-PA275156
<b>Storage</b>	Upon receipt, store at -20°C or -80°C. Avoid repeated freeze.
<b>Uniprot No.</b>	Q8NFT2
<b>Immunogen</b>	Synthesized peptide derived from C-terminal of Human STEA2.
<b>Raised In</b>	Rabbit
<b>Species Reactivity</b>	Human,Mouse
<b>Specificity</b>	The antibody detects endogenous levels of total STEA2 protein.
<b>Tested Applications</b>	ELISA,IHC,IF;IHC:1:50-1:100,IF:1:100-1:500
<b>Form</b>	Rabbit IgG in phosphate buffered saline (without Mg <sup>2+</sup> and Ca <sup>2+</sup> ), pH 7.4, 150mM NaCl, 0.02% sodium azide and 50% glycerol.
<b>Purification Method</b>	The antibody was affinity-purified from rabbit antiserum by affinity-chromatography using epitope-specific immunogen.
<b>Clonality</b>	Polyclonal
<b>Alias</b>	EC 1.16.1.-; Six-transmembrane epithelial antigen of prostate 2; SixTransMembrane protein of prostate 1; Prostate cancer-associated protein 1;
<b>Product Type</b>	Polyclonal Antibody
<b>Immunogen Species</b>	Homo sapiens (Human)
<b>Target Names</b>	STEAP2

## Image



Immunohistochemistry analysis of paraffin-embedded human colon carcinoma tissue, using STEA2 antibody.



Immunofluorescence analysis of A549 cells,  
using STEA2 antibody.