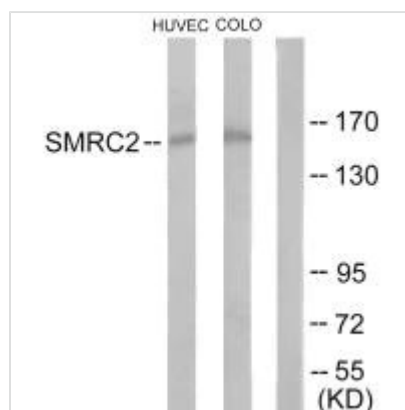




SMARCC2 Antibody

Product Code	CSB-PA586622
Storage	Upon receipt, store at -20°C or -80°C. Avoid repeated freeze.
Uniprot No.	Q8TAQ2
Immunogen	Synthesized peptide derived from internal of Human SMRC2.
Raised In	Rabbit
Species Reactivity	Human,Mouse
Specificity	The antibody detects endogenous levels of total SMRC2 protein.
Tested Applications	ELISA,WB;WB:1:500-1:3000
Form	Rabbit IgG in phosphate buffered saline (without Mg ²⁺ and Ca ²⁺), pH 7.4, 150mM NaCl, 0.02% sodium azide and 50% glycerol.
Purification Method	The antibody was affinity-purified from rabbit antiserum by affinity-chromatography using epitope-specific immunogen.
Clonality	Polyclonal
Alias	SWI/SNF-related matrix-associated actin-dependent regulator of chromatin subfamily C member 2; SWI/SNF complex 170 kDa subunit; BRG1-associated factor 170; BAF170; SMARCC2
Product Type	Polyclonal Antibody
Immunogen Species	Homo sapiens (Human)
Target Names	SMARCC2

Image



Western blot analysis of extracts from HUVEC cells and COLO205 cells, using SMRC2 antibody.