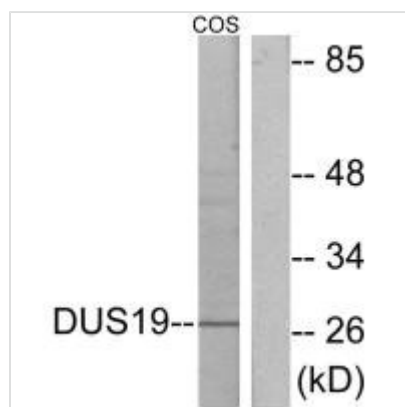




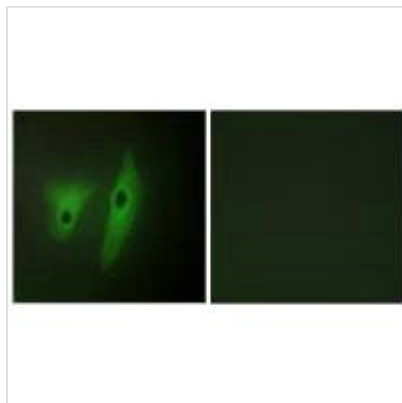
DUSP19 Antibody

Product Code	CSB-PA118771
Storage	Upon receipt, store at -20°C or -80°C. Avoid repeated freeze.
Uniprot No.	Q8WTR2
Immunogen	Synthesized peptide derived from internal of Human DUS19.
Raised In	Rabbit
Species Reactivity	Human
Specificity	The antibody detects endogenous levels of total DUS19 protein.
Tested Applications	ELISA, WB, IF; WB: 1:500-1:3000, IF: 1:100-1:500
Form	Rabbit IgG in phosphate buffered saline (without Mg ²⁺ and Ca ²⁺), pH 7.4, 150mM NaCl, 0.02% sodium azide and 50% glycerol.
Purification Method	The antibody was affinity-purified from rabbit antiserum by affinity-chromatography using epitope-specific immunogen.
Clonality	Polyclonal
Alias	Dual specificity protein phosphatase 19; EC 3.1.3.48; EC 3.1.3.16; Stress-activated protein kinase pathway-regulating phosphatase 1; Protein phosphatase SKRP1
Product Type	Polyclonal Antibody
Immunogen Species	Homo sapiens (Human)
Target Names	DUSP19

Image



Western blot analysis of extracts from COS-7 cells, using DUS19 antibody.



Immunofluorescence analysis of HeLa cells,
using DUS19 antibody.