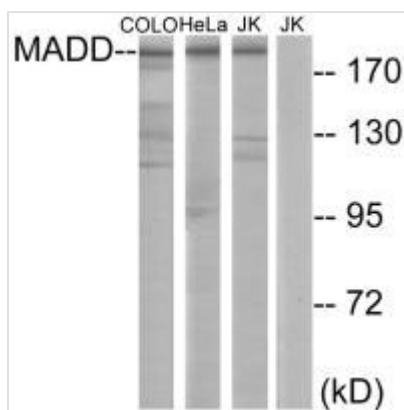




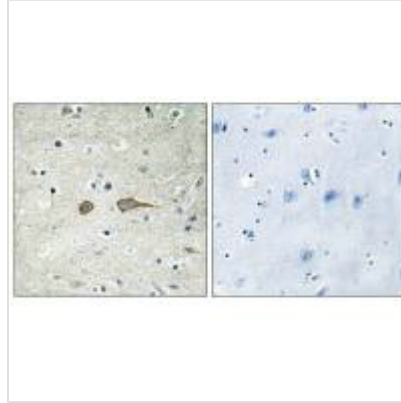
MADD Antibody

Product Code	CSB-PA265032
Storage	Upon receipt, store at -20°C or -80°C. Avoid repeated freeze.
Uniprot No.	Q8WXG6
Immunogen	Synthesized peptide derived from internal of Human MADD.
Raised In	Rabbit
Species Reactivity	Human,Mouse,Rat
Specificity	The antibody detects endogenous levels of total MADD protein.
Tested Applications	ELISA,WB,IHC,IF;WB:1:500-1:3000,IHC:1:50-1:100,IF:1:100-1:500
Form	Rabbit IgG in phosphate buffered saline (without Mg ²⁺ and Ca ²⁺), pH 7.4, 150mM NaCl, 0.02% sodium azide and 50% glycerol.
Purification Method	The antibody was affinity-purified from rabbit antiserum by affinity-chromatography using epitope-specific immunogen.
Clonality	Polyclonal
Alias	MAP kinase-activating death domain protein; Differentially expressed in normal and neoplastic cells; Insulinoma glucagonoma clone 20; Rab3 GDP/GTP exchange factor; MADD
Product Type	Polyclonal Antibody
Immunogen Species	Homo sapiens (Human)
Target Names	MADD

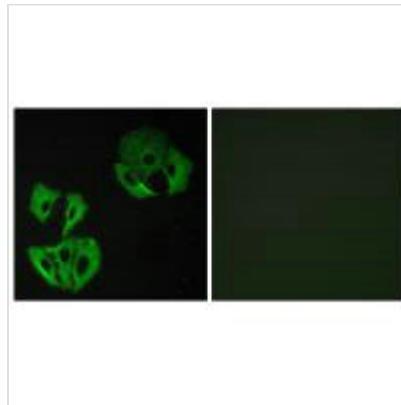
Image



Western blot analysis of extracts from COLO cells, HeLa cells and Jurkat cells, using MADD antibody.



Immunohistochemistry analysis of paraffin-embedded human brain tissue using MADD antibody.



Immunofluorescence analysis of A549 cells, using MADD antibody.

Usage

For Research Use Only. Not for use in diagnostic or therapeutic procedures.