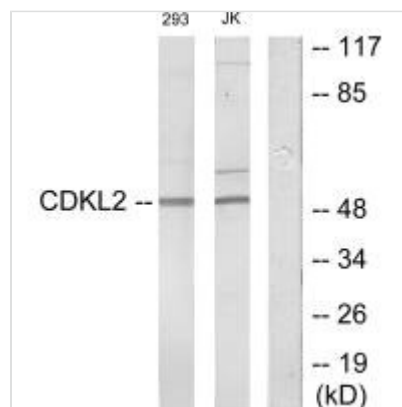




CDKL2 Antibody

Product Code	CSB-PA294019
Storage	Upon receipt, store at -20°C or -80°C. Avoid repeated freeze.
Uniprot No.	Q92772
Immunogen	Synthesized peptide derived from internal of Human CDKL2.
Raised In	Rabbit
Species Reactivity	Human
Specificity	The antibody detects endogenous levels of total CDKL2 protein.
Tested Applications	ELISA, WB; WB: 1:500-1:3000
Form	Rabbit IgG in phosphate buffered saline (without Mg ²⁺ and Ca ²⁺), pH 7.4, 150mM NaCl, 0.02% sodium azide and 50% glycerol.
Purification Method	The antibody was affinity-purified from rabbit antiserum by affinity-chromatography using epitope-specific immunogen.
Clonality	Polyclonal
Alias	Cyclin-dependent kinase-like 2; EC 2.7.11.22; Serine/threonine-protein kinase KKIAMRE; Protein kinase p56 KKIAMRE; CDKL2
Product Type	Polyclonal Antibody
Immunogen Species	Homo sapiens (Human)
Target Names	CDKL2

Image



Western blot analysis of extracts from 293 cells and Jurkat cells, using CDKL2 antibody.

Usage

For Research Use Only. Not for use in diagnostic or therapeutic procedures.