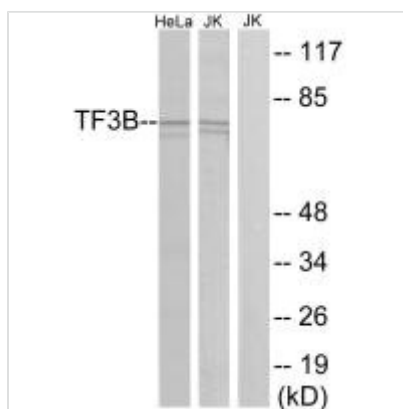




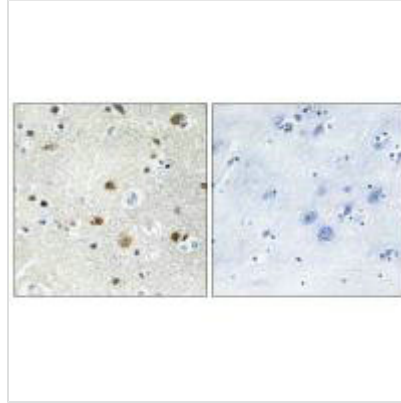
BRF1 Antibody

Product Code	CSB-PA149603
Storage	Upon receipt, store at -20°C or -80°C. Avoid repeated freeze.
Uniprot No.	Q92994
Immunogen	Synthesized peptide derived from internal of Human TF3B.
Raised In	Rabbit
Species Reactivity	Human,Mouse
Specificity	The antibody detects endogenous levels of total TF3B protein.
Tested Applications	ELISA,WB,IHC,IF;WB:1:500-1:3000,IHC:1:50-1:100,IF:1:100-1:500
Form	Rabbit IgG in phosphate buffered saline (without Mg ²⁺ and Ca ²⁺), pH 7.4, 150mM NaCl, 0.02% sodium azide and 50% glycerol.
Purification Method	The antibody was affinity-purified from rabbit antiserum by affinity-chromatography using epitope-specific immunogen.
Clonality	Polyclonal
Alias	TFIIIB90; hTFIIIB90; B-related factor 1; BRF-1; hBRF
Product Type	Polyclonal Antibody
Immunogen Species	Homo sapiens (Human)
Target Names	BRF1

Image



Western blot analysis of extracts from HeLa cells and Jurkat cells, using TF3B antibody.



Immunohistochemistry analysis of paraffin-embedded human brain tissue using TF3B antibody.



Immunofluorescence analysis of MCF-7 cells, using TF3B antibody.

Usage

For Research Use Only. Not for use in diagnostic or therapeutic procedures.