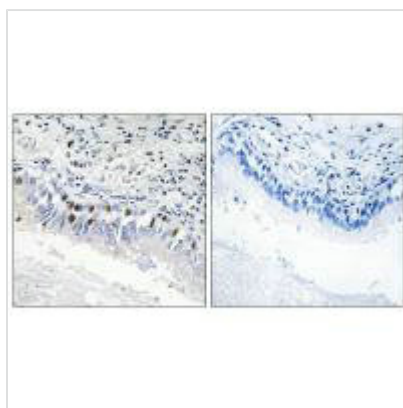




MED12 Antibody

Product Code	CSB-PA229024
Storage	Upon receipt, store at -20°C or -80°C. Avoid repeated freeze.
Uniprot No.	Q93074
Immunogen	Synthesized peptide derived from internal of Human MED12.
Raised In	Rabbit
Species Reactivity	Human
Specificity	The antibody detects endogenous levels of total MED12 protein.
Tested Applications	ELISA,IHC;IHC:1:50-1:100
Form	Rabbit IgG in phosphate buffered saline (without Mg ²⁺ and Ca ²⁺), pH 7.4, 150mM NaCl, 0.02% sodium azide and 50% glycerol.
Purification Method	The antibody was affinity-purified from rabbit antiserum by affinity-chromatography using epitope-specific immunogen.
Clonality	Polyclonal
Alias	Thyroid hormone receptor-associated protein complex 230 kDa component; Trap230; Activator-recruited cofactor 240 kDa component; ARC240; CAG repeat protein 45
Product Type	Polyclonal Antibody
Immunogen Species	Homo sapiens (Human)
Target Names	MED12

Image



Immunohistochemistry analysis of paraffin-embedded human lung carcinoma tissue, using MED12 antibody.

Usage For Research Use Only. Not for use in diagnostic or therapeutic procedures.