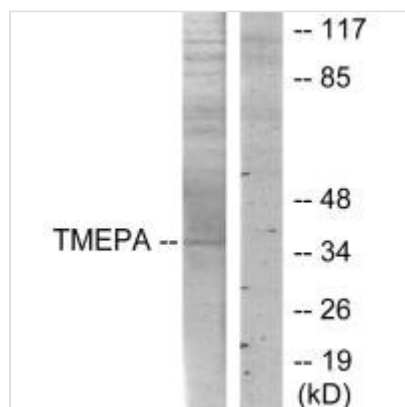




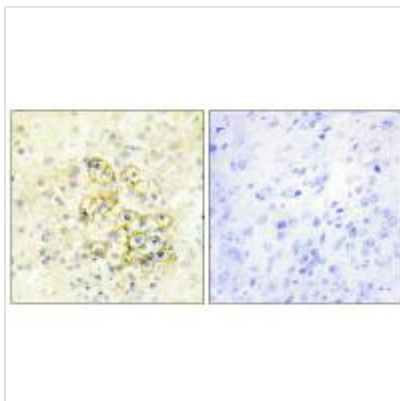
PMEPA1 Antibody

Product Code	CSB-PA172006
Storage	Upon receipt, store at -20°C or -80°C. Avoid repeated freeze.
Uniprot No.	Q969W9
Immunogen	Synthesized peptide derived from internal of Human TMEPA.
Raised In	Rabbit
Species Reactivity	Human
Specificity	The antibody detects endogenous levels of total TMEPA protein.
Tested Applications	ELISA, WB, IHC, IF; WB:1:500-1:3000, IHC:1:50-1:100, IF:1:100-1:500
Form	Rabbit IgG in phosphate buffered saline (without Mg ²⁺ and Ca ²⁺), pH 7.4, 150mM NaCl, 0.02% sodium azide and 50% glycerol.
Purification Method	The antibody was affinity-purified from rabbit antiserum by affinity-chromatography using epitope-specific immunogen.
Clonality	Polyclonal
Alias	Transmembrane prostate androgen-induced protein; Solid tumor-associated 1 protein; TMEPAI; PMEPA1; STAG1
Product Type	Polyclonal Antibody
Immunogen Species	Homo sapiens (Human)
Target Names	PMEPA1

Image



Western blot analysis of extracts from HT-29 cells, using TMEPA antibody.



Immunohistochemistry analysis of paraffin-embedded human prostate tissue using TMEPA antibody.



Immunofluorescence analysis of HUVEC cells, using TMEPA antibody.