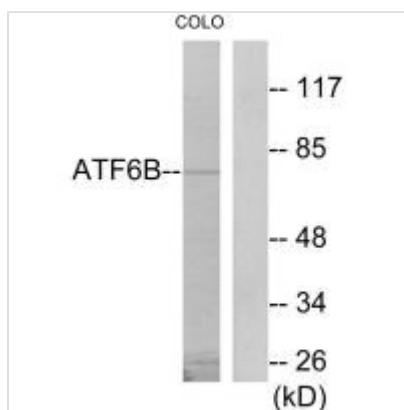




ATF6B Antibody

Product Code	CSB-PA275866
Storage	Upon receipt, store at -20°C or -80°C. Avoid repeated freeze.
Uniprot No.	Q99941
Immunogen	Synthesized peptide derived from internal of Human ATF6B.
Raised In	Rabbit
Species Reactivity	Human
Specificity	The antibody detects endogenous levels of total ATF6B protein.
Tested Applications	ELISA,WB;WB:1:500-1:3000
Form	Rabbit IgG in phosphate buffered saline (without Mg ²⁺ and Ca ²⁺), pH 7.4, 150mM NaCl, 0.02% sodium azide and 50% glycerol.
Purification Method	The antibody was affinity-purified from rabbit antiserum by affinity-chromatography using epitope-specific immunogen.
Clonality	Polyclonal
Alias	Cyclic AMP-dependent transcription factor ATF-6 beta; Activating transcription factor 6 beta; ATF6-beta; cAMP-responsive element-binding protein-like 1; cAMP response element-binding protein-related protein
Product Type	Polyclonal Antibody
Immunogen Species	Homo sapiens (Human)
Target Names	ATF6B

Image



Western blot analysis of extracts from COLO205 cells, using ATF6B antibody.

Usage For Research Use Only. Not for use in diagnostic or therapeutic procedures.